

Product datasheet for **TA329889**

Myelin expression factor 2 (MYEF2) Rabbit Polyclonal Antibody

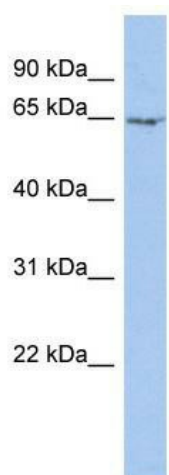
Product data:

Product Type:	Primary Antibodies
Applications:	WB
Recommended Dilution:	WB
Reactivity:	Human
Host:	Rabbit
Isotype:	IgG
Clonality:	Polyclonal
Immunogen:	The immunogen for anti-MYEF2 antibody: synthetic peptide directed towards the N terminal of human MYEF2. Synthetic peptide located within the following region: PAEAEKQQPQHSSSSNGVKMENDESAAKEEKSDLKEKSTGSKKANRFHPYS
Formulation:	Liquid. Purified antibody supplied in 1x PBS buffer with 0.09% (w/v) sodium azide and 2% sucrose. <i>Note that this product is shipped as lyophilized powder to China customers.</i>
Conjugation:	Unconjugated
Storage:	Store at -20°C as received.
Stability:	Stable for 12 months from date of receipt.
Predicted Protein Size:	64 kDa
Gene Name:	myelin expression factor 2
Database Link:	NP_057216 Entrez Gene 50804 Human Q9P2K5
Background:	MYEF2 is the transcriptional repressor of the myelin basic protein gene (MBP). MYEF2 binds to the proximal MB1 element 5'-TTGTCC-3' of the MBP promoter. Its binding to MB1 and function are inhibited by PURA.
Synonyms:	HsT18564; MEF-2; MST156; MSTP156; myEF-2
Note:	Immunogen sequence homology: Human: 100%; Rat: 93%; Mouse: 93%; Rabbit: 93%; Pig: 92%; Guinea pig: 92%; Horse: 86%; Bovine: 86%; Dog: 77%
Protein Families:	Transcription Factors



[View online »](#)

Product images:



WB Suggested Anti-MYEF2 Antibody Titration: 0.2-1 ug/ml; ELISA Titer: 1:12500; Positive Control: PANC1 cell lysate