

Product datasheet for **TA329888**

PAX4 Rabbit Polyclonal Antibody

Product data:

| | |
|--------------------------------|--|
| Product Type: | Primary Antibodies |
| Applications: | WB |
| Recommended Dilution: | WB |
| Reactivity: | Human, Rat |
| Host: | Rabbit |
| Isotype: | IgG |
| Clonality: | Polyclonal |
| Immunogen: | The immunogen for anti-PAX4 antibody: synthetic peptide directed towards the middle region of human PAX4. Synthetic peptide located within the following region: RTIFSPSQAEALEKEFQRGQYPDSVARGKLATATSLPEDTVRVWFSNRRA |
| Formulation: | Liquid. Purified antibody supplied in 1x PBS buffer with 0.09% (w/v) sodium azide and 2% sucrose. <i>Note that this product is shipped as lyophilized powder to China customers.</i> |
| Purification: | Affinity Purified |
| Conjugation: | Unconjugated |
| Storage: | Store at -20°C as received. |
| Stability: | Stable for 12 months from date of receipt. |
| Predicted Protein Size: | 37 kDa |
| Gene Name: | paired box 4 |
| Database Link: | NP_006184 Entrez Gene 83630 Rat Entrez Gene 5078 Human O43316 |
| Background: | PAX4 is a member of the paired box (PAX) family of transcription factors. Members of this gene family typically contain a paired box domain, an octapeptide, and a paired-type homeodomain. These genes play critical roles during fetal development and cancer growth. The paired box gene 4 is involved in pancreatic islet development and mouse studies have demonstrated a role for this gene in differentiation of insulin-producing β -cells. |
| Synonyms: | KPD; MODY9 |



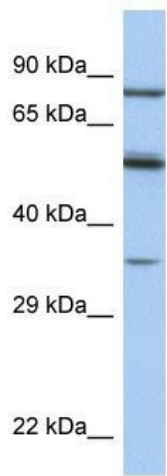
[View online »](#)

Note: Immunogen sequence homology: Human: 100%; Dog: 92%; Pig: 92%; Rat: 92%; Horse: 92%; Mouse: 92%; Bovine: 92%; Rabbit: 92%; Guinea pig: 92%

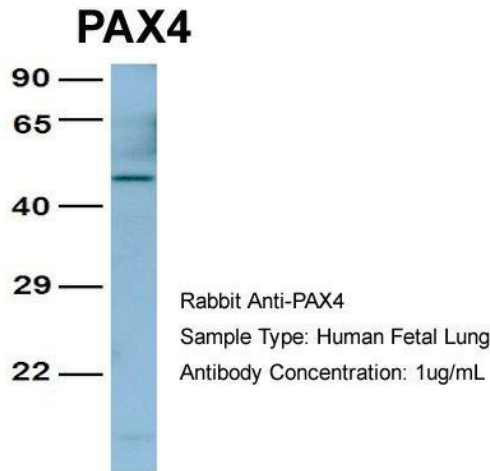
Protein Families: Embryonic stem cells, ES Cell Differentiation/IPS, Transcription Factors

Protein Pathways: Maturity onset diabetes of the young

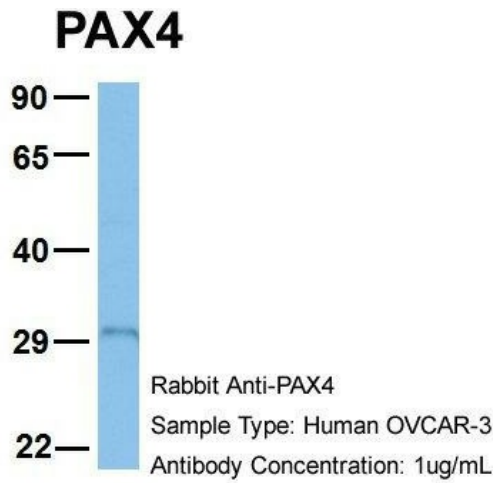
Product images:



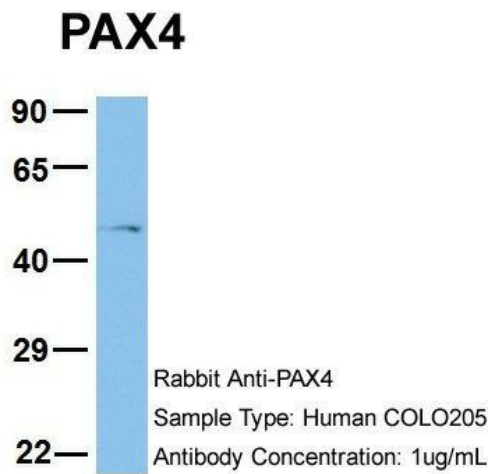
WB Suggested Anti-PAX4 Antibody Titration: 0.2-1 ug/ml; Positive Control: Jurkat cell lysate



Host: Rabbit; Target Name: PAX4; Sample Tissue: Human Fetal Lung; Antibody Dilution: 1.0ug/ml



Host: Rabbit; Target Name: PAX4; Sample Tissue: OVCAR-3; Antibody Dilution: 1.0ug/ml; PAX4 is strongly supported by BioGPS gene expression data to be expressed in Human OVCAR3 cells



Host: Rabbit; Target Name: PAX4; Sample Tissue: COLO205; Antibody Dilution: 1.0ug/ml; PAX4 is supported by BioGPS gene expression data to be expressed in COLO205