

Product datasheet for **TA329886**

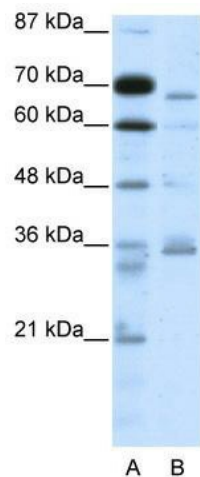
PACE4 (PCSK6) Rabbit Polyclonal Antibody

Product data:

Product Type:	Primary Antibodies
Applications:	WB
Recommended Dilution:	WB
Reactivity:	Human
Host:	Rabbit
Isotype:	IgG
Clonality:	Polyclonal
Immunogen:	The immunogen for anti-PCSK6 antibody: synthetic peptide directed towards the N terminal of human PCSK6. Synthetic peptide located within the following region: IYSASWGPDDDGKTVDPGRLAKQAFYGIKKGRQGLGSIFVWASGNGGR
Formulation:	Liquid. Purified antibody supplied in 1x PBS buffer with 0.09% (w/v) sodium azide and 2% sucrose. <i>Note that this product is shipped as lyophilized powder to China customers.</i>
Conjugation:	Unconjugated
Storage:	Store at -20°C as received.
Stability:	Stable for 12 months from date of receipt.
Predicted Protein Size:	68 kDa
Gene Name:	proprotein convertase subtilisin/kexin type 6
Database Link:	NP_612193 Entrez Gene 5046 Human P29122
Background:	PCSK6 is a calcium-dependent serine endoprotease that can cleave precursor protein at their paired basic amino acid processing sites. This gene is thought to play a role in tumor progression.
Synonyms:	PACE4; SPC4
Note:	Immunogen sequence homology: Dog: 100%; Pig: 100%; Rat: 100%; Horse: 100%; Human: 100%; Mouse: 100%; Rabbit: 100%; Guinea pig: 92%; Bovine: 77%; Zebrafish: 77%
Protein Families:	Druggable Genome, Protease, Secreted Protein



[View online »](#)

Product images:

WB Suggested Anti-PCSK6 Antibody Titration: 2.5 ug/ml; ELISA Titer: 1:312500; Positive Control: HepG2 cell lysate. There is BioGPS gene expression data showing that PCSK6 is expressed in HepG2.