

Product datasheet for **TA329882**

RNF20 Rabbit Polyclonal Antibody

Product data:

Product Type:	Primary Antibodies
Applications:	WB
Recommended Dilution:	WB
Reactivity:	Human
Host:	Rabbit
Isotype:	IgG
Clonality:	Polyclonal
Immunogen:	The immunogen for anti-RNF20 antibody: synthetic peptide directed towards the N terminal of human RNF20. Synthetic peptide located within the following region: LKRYDLEQGLGDLLTERKALVVPEPEPDSNQRKDDREREGEGQEPAFS
Formulation:	Liquid. Purified antibody supplied in 1x PBS buffer with 0.09% (w/v) sodium azide and 2% sucrose. <i>Note that this product is shipped as lyophilized powder to China customers.</i>
Conjugation:	Unconjugated
Storage:	Store at -20°C as received.
Stability:	Stable for 12 months from date of receipt.
Predicted Protein Size:	114 kDa
Gene Name:	ring finger protein 20
Database Link:	NP_062538 Entrez Gene 56254 Human Q5VTR2
Background:	RNF20 shares similarity with BRE1 of <i>S. cerevisiae</i> . Yeast BRE1 is an ubiquitin ligase required for the ubiquitination of histone H2B and the methylation of histone H3. The protein encoded by this gene shares similarity with BRE1 of <i>S. cerevisiae</i> . Yeast BRE1 is a ubiquitin ligase required for the ubiquitination of histone H2B and the methylation of histone H3. Publication Note: This RefSeq record includes a subset of the publications that are available for this gene. Please see the Entrez Gene record to access additional publications.
Synonyms:	BRE1; BRE1A; hBRE1

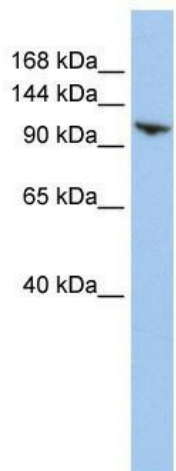


[View online »](#)

Note: Immunogen sequence homology: Dog: 100%; Pig: 100%; Rat: 100%; Horse: 100%; Human: 100%; Mouse: 100%; Bovine: 100%; Rabbit: 100%; Guinea pig: 100%

Protein Families: Druggable Genome

Product images:



WB Suggested Anti-RNF20 Antibody Titration: 0.2-1 ug/ml; ELISA Titer: 1:62500; Positive Control: HepG2 cell lysate