

## Product datasheet for **TA329881**

### RNF186 Rabbit Polyclonal Antibody

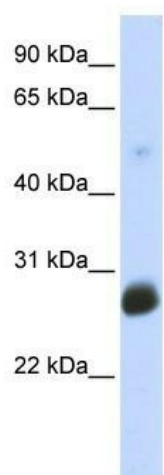
#### Product data:

Product Type:	Primary Antibodies
Applications:	WB
Recommended Dilution:	WB
Reactivity:	Human
Host:	Rabbit
Isotype:	IgG
Clonality:	Polyclonal
Immunogen:	The immunogen for anti-RNF186 antibody: synthetic peptide directed towards the middle region of human RNF186. Synthetic peptide located within the following region: GQLAQPCTEVSLCPQGLVDPADLAAGHPSLVGEDGQDEVSAANHVAARRLA
Formulation:	Liquid. Purified antibody supplied in 1x PBS buffer with 0.09% (w/v) sodium azide and 2% sucrose. <i>Note that this product is shipped as lyophilized powder to China customers.</i>
Conjugation:	Unconjugated
Storage:	Store at -20°C as received.
Stability:	Stable for 12 months from date of receipt.
Predicted Protein Size:	24 kDa
Gene Name:	ring finger protein 186
Database Link:	<a href="#">NP_061935</a> <a href="#">Entrez Gene 54546 Human</a> <a href="#">Q9NXI6</a>
Background:	The specific function of RNF186 is not yet known.
Synonyms:	RP11-91K11.1
Note:	Immunogen sequence homology: Human: 100%; Horse: 85%; Pig: 83%; Guinea pig: 83%
Protein Families:	Druggable Genome, Transmembrane



[View online »](#)

## Product images:



WB Suggested Anti-RNF186 Antibody Titration:  
0.2-1 ug/ml; ELISA Titer: 1:62500; Positive Control:  
Transfected 293T