

Product datasheet for **TA329879**

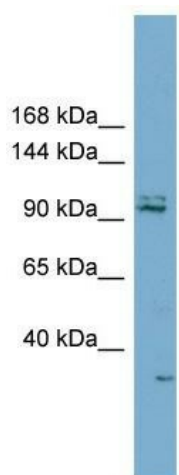
RC3H2 Rabbit Polyclonal Antibody

Product data:

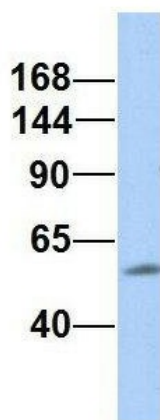
Product Type:	Primary Antibodies
Applications:	WB
Recommended Dilution:	WB
Reactivity:	Human
Host:	Rabbit
Isotype:	IgG
Clonality:	Polyclonal
Immunogen:	The immunogen for anti-RC3H2 antibody: synthetic peptide directed towards the middle region of human RC3H2. Synthetic peptide located within the following region: YSRKGHETPQPQNSKYKTSMDLRQGGCPRGTNCTFAHSQEELEKYR
Formulation:	Liquid. Purified antibody supplied in 1x PBS buffer with 0.09% (w/v) sodium azide and 2% sucrose.
Conjugation:	Unconjugated
Storage:	Store at -20°C as received.
Stability:	Stable for 12 months from date of receipt.
Predicted Protein Size:	118 kDa
Gene Name:	ring finger and CCCH-type domains 2
Database Link:	NP_001094058 Entrez Gene 54542 Human Q9HBD1
Background:	The function of this protein remains unknown.
Synonyms:	MNAB; RNF164
Note:	Immunogen sequence homology: Dog: 100%; Pig: 100%; Rat: 100%; Horse: 100%; Human: 100%; Mouse: 100%; Bovine: 100%; Rabbit: 100%; Guinea pig: 100%
Protein Families:	Druggable Genome



[View online »](#)

Product images:


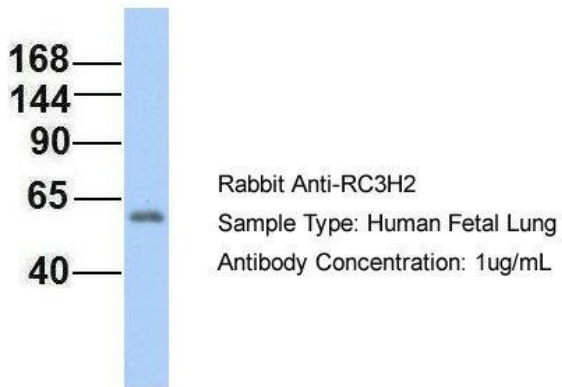
WB Suggested Anti-RC3H2 Antibody Titration: 0.2-1 ug/ml; Positive Control: PANC1 cell lysate

RC3H2


Rabbit Anti-RC3H2
Sample Type: Human Adult Placenta
Antibody Concentration: 1ug/mL

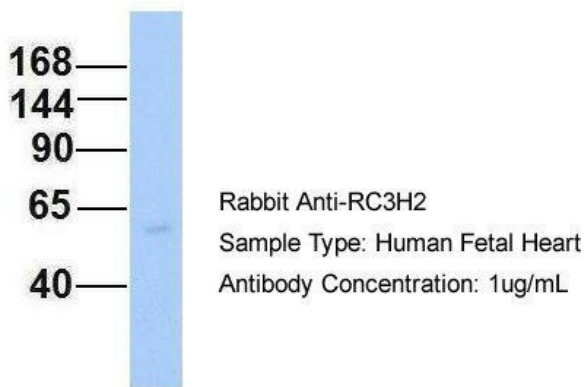
2Hum. Adult Placenta; Host: Rabbit; Target Name: CHAD; Sample Tissue: Human Adult Placenta; Antibody Dilution: 1.0ug/ml

RC3H2



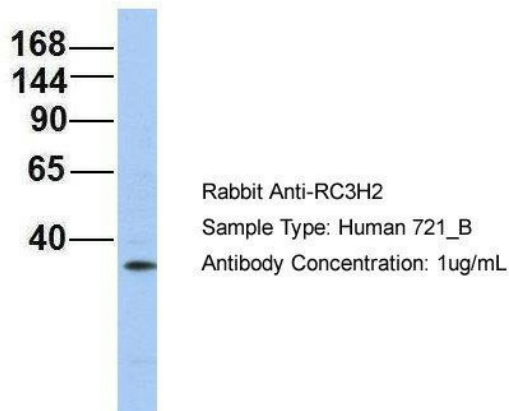
Host: Rabbit; Target Name: RC3H2; Sample
Tissue: Human Fetal Lung; Antibody Dilution:
1.0ug/ml

RC3H2



Host: Rabbit; Target Name: RC3H2; Sample
Tissue: Human Fetal Heart; Antibody Dilution:
1.0ug/ml

RC3H2



Host: Rabbit; Target Name: RC3H2; Sample
Tissue: 721_B; Antibody Dilution: 1.0ug/ml;
RC3H2 is strongly supported by BioGPS gene
expression data to be expressed in Human 721_B
cells