

Product datasheet for **TA329877**

CHFR Rabbit Polyclonal Antibody

Product data:

Product Type:	Primary Antibodies
Applications:	IHC, WB
Recommended Dilution:	WB, IHC
Reactivity:	Human
Host:	Rabbit
Isotype:	IgG
Clonality:	Polyclonal
Immunogen:	The immunogen for anti-CHFR antibody: synthetic peptide directed towards the N terminal of human CHFR. Synthetic peptide located within the following region: REWTIGRRRGCDLSFPSNKLVS GDHCRIVVDEKSGQVTLEDTSTSGTVIN
Formulation:	Liquid. Purified antibody supplied in 1x PBS buffer with 0.09% (w/v) sodium azide and 2% sucrose. <i>Note that this product is shipped as lyophilized powder to China customers.</i>
Conjugation:	Unconjugated
Storage:	Store at -20°C as received.
Stability:	Stable for 12 months from date of receipt.
Predicted Protein Size:	69 kDa
Gene Name:	checkpoint with forkhead and ring finger domains, E3 ubiquitin protein ligase
Database Link:	NP_060693 Entrez Gene 55743 Human Q96EP1
Background:	CHFR is an E3 ubiquitin-protein ligase required to transiently arrest cells in early prophase when they are exposed to microtubule poisons. It acts in early prophase before chromosome condensation, when the centrosome moves apart from each other along the periphery of the nucleus. CHFR probably promotes the formation of 'Lys-63'-linked polyubiquitin chains and functions with the specific ubiquitin-conjugating UBC13-MMS2 (UBE2N-UBE2V2) heterodimer. Substrates that are polyubiquitinated at 'Lys-63' are usually not targeted for degradation, but are rather involved in signaling cellular stress. This suggests that it may be involved in signaling the presence of mitotic stress caused by microtubule poisons.



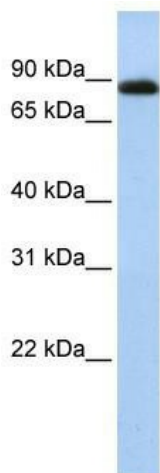
[View online »](#)

Synonyms: RNF116; RNF196

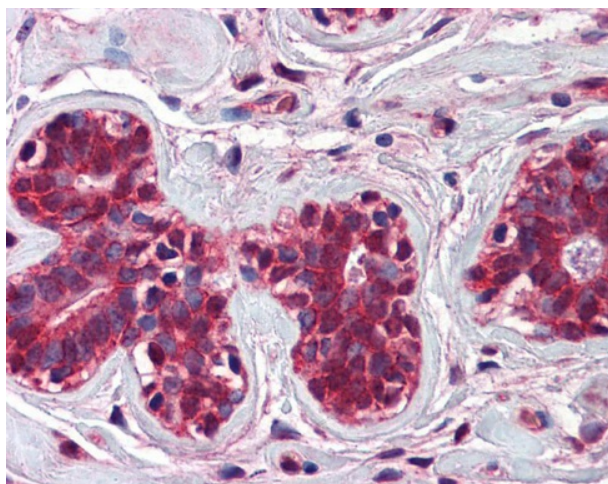
Note: Immunogen sequence homology: Pig: 100%; Rat: 100%; Human: 100%; Mouse: 100%; Rabbit: 100%; Guinea pig: 100%; Dog: 93%; Horse: 93%; Bovine: 93%; Zebrafish: 86%

Protein Families: Druggable Genome

Product images:



WB Suggested Anti-CHFR Antibody Titration: 0.2-1 ug/ml; ELISA Titer: 1:312500; Positive Control: HepG2 cell lysate
CHFR is supported by BioGPS gene expression data to be expressed in HepG2



Breast