

Product datasheet for **TA329872**

MARCH I (MARCH1) Rabbit Polyclonal Antibody

Product data:

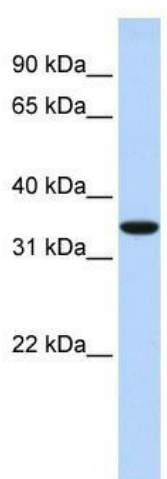
Product Type:	Primary Antibodies
Applications:	WB
Recommended Dilution:	WB
Reactivity:	Human
Host:	Rabbit
Isotype:	IgG
Clonality:	Polyclonal
Immunogen:	The immunogen for anti-MARCH1 antibody: synthetic peptide directed towards the N terminal of human MARCH1. Synthetic peptide located within the following region: LQASSPTTGTAPRSQSRLSVCSTQDICRICHCEGDEESPLITPCRCTGT
Formulation:	Liquid. Purified antibody supplied in 1x PBS buffer with 0.09% (w/v) sodium azide and 2% sucrose. <i>Note that this product is shipped as lyophilized powder to China customers.</i>
Conjugation:	Unconjugated
Storage:	Store at -20°C as received.
Stability:	Stable for 12 months from date of receipt.
Predicted Protein Size:	31 kDa
Gene Name:	membrane associated ring-CH-type finger 1
Database Link:	NP_001159845 Entrez Gene 55016 Human Q8TCQ1
Background:	MARCH1 is an E3 ubiquitin-protein ligase that may mediate ubiquitination of TFRC, CD86 and FAS, and promote their subsequent endocytosis and sorting to lysosomes via multivesicular bodies. E3 ubiquitin ligases accept ubiquitin from an E2 ubiquitin-conjugating enzyme in the form of a thioester and then directly transfer the ubiquitin to targeted substrates.
Synonyms:	MARCH-I; RNF171
Note:	Immunogen sequence homology: Dog: 100%; Pig: 100%; Rat: 100%; Horse: 100%; Human: 100%; Mouse: 100%; Bovine: 100%; Rabbit: 100%; Guinea pig: 100%



[View online »](#)

Protein Families: Druggable Genome, Transmembrane

Product images:



WB Suggested Anti-MARCH1 Antibody Titration:
0.2-1 ug/ml; ELISA Titer: 1:1562500; Positive
Control: Human Muscle