

Product datasheet for **TA329871**

HERC3 Rabbit Polyclonal Antibody

Product data:

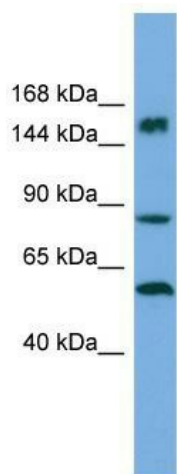
Product Type:	Primary Antibodies
Applications:	WB
Recommended Dilution:	WB
Reactivity:	Human
Host:	Rabbit
Isotype:	IgG
Clonality:	Polyclonal
Immunogen:	The immunogen for Anti-HERC3 antibody is: synthetic peptide directed towards the middle region of Human HERC3. Synthetic peptide located within the following region: LHFPLALYKLLNVKPGLEDLKELSPTTEGRSLQELLDYPGEDVEETFCLN
Formulation:	Liquid. Purified antibody supplied in 1x PBS buffer with 0.09% (w/v) sodium azide and 2% sucrose. <i>Note that this product is shipped as lyophilized powder to China customers.</i>
Purification:	Affinity Purified
Conjugation:	Unconjugated
Storage:	Store at -20°C as received.
Stability:	Stable for 12 months from date of receipt.
Predicted Protein Size:	54 kDa
Gene Name:	HECT and RLD domain containing E3 ubiquitin protein ligase 3
Database Link:	NP_055421 Entrez Gene 8916 Human Q15034
Background:	The function of this protein remains unknown.
Synonyms:	KIAA0032
Note:	Immunogen sequence homology: Dog: 100%; Pig: 100%; Rat: 100%; Human: 100%; Mouse: 100%; Rabbit: 100%; Guinea pig: 100%; Horse: 92%; Bovine: 92%; Yeast: 91%; Zebrafish: 85%
Protein Families:	Druggable Genome



[View online »](#)

Protein Pathways: Ubiquitin mediated proteolysis

Product images:



Host: Rabbit; Target Name: HERC3; Sample
Tissue: ACHN Whole Cell lysates; Antibody
Dilution: 1.0ug/ml