

Product datasheet for **TA329870**

HERC6 Rabbit Polyclonal Antibody

Product data:

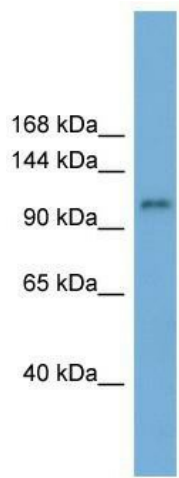
Product Type:	Primary Antibodies
Applications:	WB
Recommended Dilution:	WB
Reactivity:	Human
Host:	Rabbit
Isotype:	IgG
Clonality:	Polyclonal
Immunogen:	The immunogen for anti-HERC6 antibody: synthetic peptide directed towards the N terminal of human HERC6. Synthetic peptide located within the following region: LSKDSQVFSWGKNSHGQLGLGKEFPSQASPQRVRSLEGIPLAQAAGGAH
Formulation:	Liquid. Purified antibody supplied in 1x PBS buffer with 0.09% (w/v) sodium azide and 2% sucrose.
Conjugation:	Unconjugated
Storage:	Store at -20°C as received.
Stability:	Stable for 12 months from date of receipt.
Predicted Protein Size:	115 kDa
Gene Name:	HECT and RLD domain containing E3 ubiquitin protein ligase family member 6
Database Link:	NP_060382 Entrez Gene 55008 Human Q8IVU3
Background:	HERC6 belongs to the HERC family of ubiquitin ligases, all of which contain a HECT domain and at least 1 RCC1 (MIM 179710)-like domain (RLD). The 350-amino acid HECT domain is predicted to catalyze the formation of a thioester with ubiquitin before transferring it to a substrate, and the RLD is predicted to act as a guanine nucleotide exchange factor for small G proteins (Hochrainer et al., 2005 [PubMed 15676274]).
Synonyms:	FLJ20637
Note:	Immunogen sequence homology: Pig: 100%; Horse: 100%; Human: 100%; Bovine: 100%; Rabbit: 100%; Dog: 93%; Rat: 93%; Mouse: 93%; Guinea pig: 93%



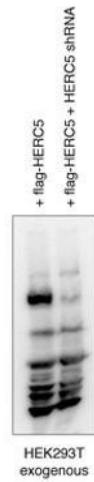
[View online »](#)

Protein Families: Druggable Genome

Product images:



WB Suggested Anti-HERC6 Antibody Titration: 0.2-1 ug/ml; Positive Control: ACHN cell lysate



HERC6 antibody - N-terminal region validated by WB using hek293 cell lysate at 1:1000.HERC6 is supported by BioGPS gene expression data to be expressed in HEK293