

Product datasheet for **TA329866**

MARCHF5 Rabbit Polyclonal Antibody

Product data:

Product Type:	Primary Antibodies
Applications:	WB
Recommended Dilution:	WB
Reactivity:	Human
Host:	Rabbit
Isotype:	IgG
Clonality:	Polyclonal
Immunogen:	The immunogen for anti-MARCH5 antibody: synthetic peptide directed towards the N terminal of human MARCH5. Synthetic peptide located within the following region: CRGSTKVVHQACLQRWVDEKQRGNSTARVACPQCNAEYLIVFPKLGPPVY
Formulation:	Liquid. Purified antibody supplied in 1x PBS buffer with 0.09% (w/v) sodium azide and 2% sucrose. <i>Note that this product is shipped as lyophilized powder to China customers.</i>
Conjugation:	Unconjugated
Storage:	Store at -20°C as received.
Stability:	Stable for 12 months from date of receipt.
Predicted Protein Size:	31 kDa
Gene Name:	membrane associated ring-CH-type finger 5
Database Link:	NP_060294 Entrez Gene 54708 Human Q9NX47
Background:	MARCH5 is an ubiquitin ligase of the mitochondrial outer membrane that plays a role in the control of mitochondrial morphology by regulating mitofusin-2 (MFN2) and DRP1 (DNM1L). MARCH5 is a ubiquitin ligase of the mitochondrial outer membrane that plays a role in the control of mitochondrial morphology by regulating mitofusin-2 (MFN2; MIM 608507) and DRP1 (DNM1L; MIM 603850) (Nakamura et al., 2006 [PubMed 16936636]). [supplied by OMIM]. PRIMARYREFSEQ_SPAN PRIMARY_IDENTIFIER PRIMARY_SPAN COMP 1-1502 AK000452.1 3-1504 1503-1863 BC015480.1 1463-1823 1864-1901 BE393612.1 438-475 1902-3713 BC015480.1 1852-3663 3714-3941 BC015480.1 3669-3896



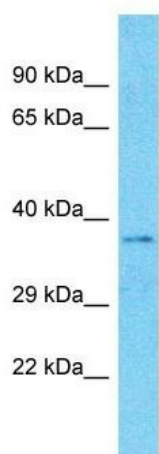
[View online »](#)

Synonyms: MARCH-V; MITOL; RNF153

Note: Immunogen sequence homology: Dog: 100%; Pig: 100%; Rat: 100%; Horse: 100%; Human: 100%; Mouse: 100%; Bovine: 100%; Rabbit: 100%; Zebrafish: 100%; Guinea pig: 100%

Protein Families: Transmembrane

Product images:



Host: Rabbit; Target Name: MARCH5 ; Sample
Tissue: U937 Whole Cell lysates; Antibody
Dilution: 1.0 ug/ml