

Product datasheet for **TA329864**

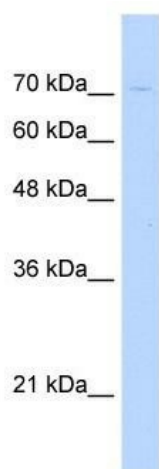
KIAA1333 (G2E3) Rabbit Polyclonal Antibody

Product data:

Product Type:	Primary Antibodies
Applications:	WB
Recommended Dilution:	WB
Reactivity:	Human
Host:	Rabbit
Isotype:	IgG
Clonality:	Polyclonal
Immunogen:	The immunogen for anti-KIAA1333 antibody: synthetic peptide directed towards the N terminal of human KIAA1333. Synthetic peptide located within the following region: IWQRGKEEEGVYGLIEDIRKEVNRASKLKCCVCKKNGASIGCVAPRCKR
Formulation:	Liquid. Purified antibody supplied in 1x PBS buffer with 0.09% (w/v) sodium azide and 2% sucrose. <i>Note that this product is shipped as lyophilized powder to China customers.</i>
Conjugation:	Unconjugated
Storage:	Store at -20°C as received.
Stability:	Stable for 12 months from date of receipt.
Predicted Protein Size:	80 kDa
Gene Name:	G2/M-phase specific E3 ubiquitin protein ligase
Database Link:	NP_060239 Entrez Gene 55632 Human Q7L622
Background:	KIAA1333 is a probable E3 ubiquitin-protein ligase which accepts ubiquitin from an E2 ubiquitin-conjugating enzyme in the form of a thioester and then directly transfers the ubiquitin to targeted substrates.
Synonyms:	KIAA1333; PHF7B
Note:	Immunogen sequence homology: Dog: 100%; Pig: 100%; Rat: 100%; Horse: 100%; Human: 100%; Mouse: 100%; Bovine: 100%; Rabbit: 100%; Guinea pig: 93%
Protein Families:	Druggable Genome, Transcription Factors



[View online »](#)

Product images:

WB Suggested Anti-KIAA1333 Antibody Titration:
0.2-1 ug/ml; Positive Control: HepG2 cell lysate