

Product datasheet for **TA329860**

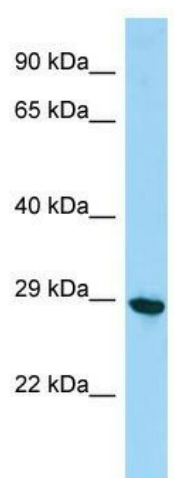
Phf7 Rabbit Polyclonal Antibody

Product data:

Product Type:	Primary Antibodies
Applications:	WB
Recommended Dilution:	WB
Reactivity:	Mouse
Host:	Rabbit
Isotype:	IgG
Clonality:	Polyclonal
Immunogen:	The immunogen for Anti-Phf7 antibody is: synthetic peptide directed towards the C-terminal region of MOUSE Phf7. Synthetic peptide located within the following region: AIYHRKCIQKYAHTSAKHFFKCPQCNNREEFPQEMLRMGIHIPDRRWRLI
Formulation:	Liquid. Purified antibody supplied in 1x PBS buffer with 0.09% (w/v) sodium azide and 2% sucrose.
Purification:	Affinity Purified
Conjugation:	Unconjugated
Storage:	Store at -20°C as received.
Stability:	Stable for 12 months from date of receipt.
Predicted Protein Size:	29 kDa
Gene Name:	PHD finger protein 7
Database Link:	NP_082225 Entrez Gene 71838 Mouse Q9DAG9
Background:	Phf7 may play a role in spermatogenesis.
Synonyms:	DKFZp434L1850; HSPC045; HSPC226; MGC26088; NYD-SP6
Note:	Immunogen sequence homology: Dog: 100%; Pig: 100%; Rat: 100%; Horse: 100%; Human: 100%; Mouse: 100%; Bovine: 100%; Rabbit: 100%; Guinea pig: 100%


[View online »](#)

Product images:



Host: Rabbit; Target Name: Phf7; Sample Tissue: Mouse Testis lysates; Antibody Dilution: 1.0 ug/ml