

Product datasheet for **TA329859**

HERC5 Rabbit Polyclonal Antibody

Product data:

Product Type:	Primary Antibodies
Applications:	IHC, WB
Recommended Dilution:	WB
Reactivity:	Human
Host:	Rabbit
Isotype:	IgG
Clonality:	Polyclonal
Immunogen:	The immunogen for anti-HERC5 antibody: synthetic peptide directed towards the middle region of human HERC5. Synthetic peptide located within the following region: FHPEELKDVIVGNTDYDWKTFEKNARYEPGYNSSHPTIVMFWKAFHKLT
Formulation:	Liquid. Purified antibody supplied in 1x PBS buffer with 0.09% (w/v) sodium azide and 2% sucrose.
Conjugation:	Unconjugated
Storage:	Store at -20°C as received.
Stability:	Stable for 12 months from date of receipt.
Predicted Protein Size:	117 kDa
Gene Name:	HECT and RLD domain containing E3 ubiquitin protein ligase 5
Database Link:	NP_057407 Entrez Gene 51191 Human Q9UII4
Background:	HERC5 is a member of the HERC family of ubiquitin ligases. It contains a HECT domain and five RCC1 repeats. Pro-inflammatory cytokines upregulate expression of HERC5 protein in endothelial cells. The protein localizes to the cytoplasm and perinuclear region and functions as an interferon-induced E3 protein ligase that mediates ISGylation of protein targets. This gene is a member of the HERC family of ubiquitin ligases and encodes a protein with a HECT domain and five RCC1 repeats. Pro-inflammatory cytokines upregulate expression of this gene in endothelial cells. The protein localizes to the cytoplasm and perinuclear region and functions as an interferon-induced E3 protein ligase that mediates ISGylation of protein targets. The gene lies in a cluster of HERC family genes on chromosome 4.



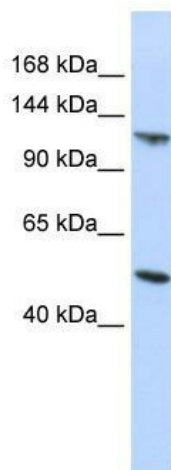
[View online »](#)

Synonyms: CEB1; CEBP1

Note: Immunogen sequence homology: Human: 100%; Rabbit: 86%; Pig: 79%; Rat: 79%; Horse: 79%; Bovine: 79%

Protein Families: Druggable Genome

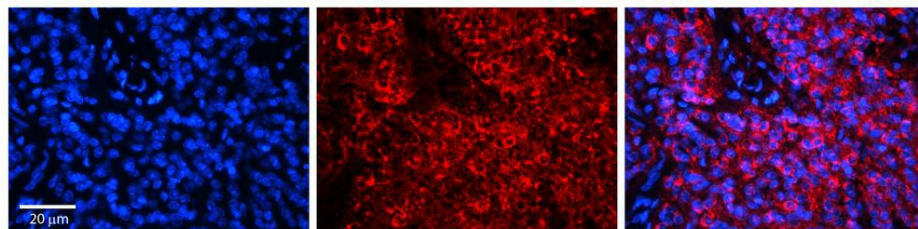
Product images:



WB Suggested Anti-HERC5 Antibody Titration: 0.2-1 ug/ml; ELISA Titer: 1:312500; Positive Control: HepG2 cell lysate



HERC5 antibody - middle region validated by WB using HEK293 cell lysate at 1:1000.HERC5 is supported by BioGPS gene expression data to be expressed in HEK293



Rabbit Anti-HERC5 Antibody; Formalin Fixed Paraffin Embedded Tissue: Human Pineal Tissue; Observed Staining: Cytoplasmic in cell bodies and processes of pinealocytes; Primary Antibody Concentration: 1:100; Other Working Concentrations: 1/600; Secondary An