

Product datasheet for **TA329857**

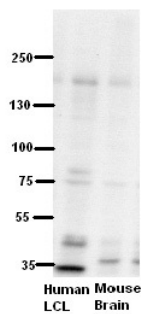
RNF160 (LTN1) Rabbit Polyclonal Antibody

Product data:

| | |
|--------------------------------|--|
| Product Type: | Primary Antibodies |
| Recommended Dilution: | WB |
| Reactivity: | Human, Mouse |
| Host: | Rabbit |
| Isotype: | IgG |
| Clonality: | Polyclonal |
| Immunogen: | The immunogen for anti-ZNF294 antibody: synthetic peptide directed towards the N terminal of human ZNF294. Synthetic peptide located within the following region: MGGKKNKQRTKGNLRPSNSGRAAEELLAKEQGTVPGFIFGFGTSQSDLGYVPA |
| Formulation: | Liquid. Purified antibody supplied in 1x PBS buffer with 0.09% (w/v) sodium azide and 2% sucrose. <i>Note that this product is shipped as lyophilized powder to China customers.</i> |
| Conjugation: | Unconjugated |
| Storage: | Store at -20°C as received. |
| Stability: | Stable for 12 months from date of receipt. |
| Predicted Protein Size: | 200 kDa |
| Gene Name: | listerin E3 ubiquitin protein ligase 1 |
| Database Link: | NP_056380 Entrez Gene 26046 Human O94822 |
| Background: | ZNF294 may function as an E3 ubiquitin-protein ligase. E3 ubiquitin ligases accept ubiquitin from an E2 ubiquitin-conjugating enzyme in the form of a thioester and then directly transfer the ubiquitin to targeted substrates. |
| Synonyms: | C21orf10; C21orf98; RNF160; ZNF294 |
| Note: | Immunogen sequence homology: Dog: 100%; Pig: 100%; Rat: 100%; Horse: 100%; Human: 100%; Mouse: 100%; Bovine: 100%; Rabbit: 100%; Zebrafish: 93% |



[View online »](#)

Product images:

WB Suggested Anti-ZNF294 Antibody Titration:
5% Milk
ELISA Titer: dilution: 1:500
Positive Control: human LCL and mouse brains