

Product datasheet for **TA329855**

RNF167 Rabbit Polyclonal Antibody

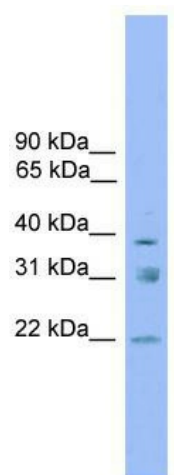
Product data:

Product Type:	Primary Antibodies
Applications:	WB
Recommended Dilution:	WB
Reactivity:	Human
Host:	Rabbit
Isotype:	IgG
Clonality:	Polyclonal
Immunogen:	The immunogen for anti-RNF167 antibody: synthetic peptide directed towards the middle region of human RNF167. Synthetic peptide located within the following region: GIVGLLVLAMGAVMIARCIQHRKRLQRNRLTKEQLKQIPTHDYQKGDQYD
Formulation:	Liquid. Purified antibody supplied in 1x PBS buffer with 0.09% (w/v) sodium azide and 2% sucrose. <i>Note that this product is shipped as lyophilized powder to China customers.</i>
Conjugation:	Unconjugated
Storage:	Store at -20°C as received.
Stability:	Stable for 12 months from date of receipt.
Predicted Protein Size:	38 kDa
Gene Name:	ring finger protein 167
Database Link:	NP_056343 Entrez Gene 26001 Human Q9H6Y7
Background:	RNF167 is an E3 ubiquitin ligase that interacts with TSSC5 (SLC22A18; MIM 602631) and, together with UBCH6 (UBE2E1; MIM 602916), facilitates TSSC5 polyubiquitylation (Yamada and Gorbsky, 2006 [PubMed 16314844]).
Synonyms:	5730408C10Rik; LP2254; RING105
Note:	Immunogen sequence homology: Dog: 100%; Pig: 100%; Rat: 100%; Horse: 100%; Human: 100%; Mouse: 100%; Bovine: 100%; Guinea pig: 100%; Rabbit: 93%
Protein Families:	Druggable Genome, Transmembrane



[View online »](#)

Product images:



WB Suggested Anti-RNF167 Antibody Titration:
0.2-1 ug/ml; ELISA Titer: 1:312500; Positive
Control: HeLa cell lysate RNF167 is supported by
BioGPS gene expression data to be expressed in
HeLa