

Product datasheet for **TA329854**

DORFIN (RNF19A) Rabbit Polyclonal Antibody

Product data:

Product Type:	Primary Antibodies
Applications:	WB
Recommended Dilution:	WB
Reactivity:	Human
Host:	Rabbit
Isotype:	IgG
Clonality:	Polyclonal
Immunogen:	The immunogen for anti-RNF19A antibody: synthetic peptide directed towards the N terminal of human RNF19A. Synthetic peptide located within the following region: IFSTNTSSDNGLTSSISKQIGDFIECPLCLRHSKDRFPDIMTCHHRSCVD
Formulation:	Liquid. Purified antibody supplied in 1x PBS buffer with 0.09% (w/v) sodium azide and 2% sucrose.
Conjugation:	Unconjugated
Storage:	Store at -20°C as received.
Stability:	Stable for 12 months from date of receipt.
Predicted Protein Size:	91 kDa
Gene Name:	ring finger protein 19A, RBR E3 ubiquitin protein ligase
Database Link:	NP_056250 Entrez Gene 25897 Human Q9NV58



[View online »](#)

Background:

RNF19A contains two RING-finger motifs and an IBR (in between RING fingers) motif. This protein is an E3 ubiquitin ligase that is localized in Lewy bodies (LBs), a characteristic neuronal inclusion in Parkinson's disease (PD) brains. This protein interacts with UBE2L3/UBCH7 and UBE2E2/UBCH8, but not other ubiquitin-conjugating enzymes. This protein is found to bind and ubiquitylate synphilin 1 (SNCAIP), which is a interacting protein of alpha synuclein in neurons, and a major component of LB. The protein encoded this gene contains two RING-finger motifs and an IBR (in between RING fingers) motif. This protein is an E3 ubiquitin ligase that is localized in Lewy bodies (LBs), a characteristic neuronal inclusion in Parkinson's disease (PD) brains. This protein interacts with UBE2L3/UBCH7 and UBE2E2/UBCH8, but not other ubiquitin-conjugating enzymes. This protein is found to bind and ubiquitylate synphilin 1 (SNCAIP), which is a interacting protein of alpha synuclein in neurons, and a major component of LB. Alternatively spliced transcript variants encoding the same protein have been reported.

Synonyms:

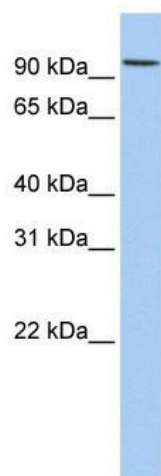
RNF19

Note:

Immunogen sequence homology: Dog: 100%; Pig: 100%; Rat: 100%; Horse: 100%; Human: 100%; Mouse: 100%; Bovine: 100%; Rabbit: 93%; Guinea pig: 93%

Protein Families:

Druggable Genome, Transcription Factors, Transmembrane

Product images:

WB Suggested Anti-RNF19A Antibody Titration:
0.2-1 ug/ml; ELISA Titer: 1:1562500; Positive
Control: Human brain