

## Product datasheet for **TA329852**

### **NEDD4 2 (NEDD4L) Rabbit Polyclonal Antibody**

#### **Product data:**

<b>Product Type:</b>	Primary Antibodies
<b>Applications:</b>	WB
<b>Recommended Dilution:</b>	WB
<b>Reactivity:</b>	Human
<b>Host:</b>	Rabbit
<b>Isotype:</b>	IgG
<b>Clonality:</b>	Polyclonal
<b>Immunogen:</b>	The immunogen for anti-NEDD4L antibody: synthetic peptide directed towards the middle region of human NEDD4L. Synthetic peptide located within the following region: TVTLSAPLEGAKDSPVRRVAVKDTLSNPQSPQSPYNSPKPQHKVTQSFLP
<b>Formulation:</b>	Liquid. Purified antibody supplied in 1x PBS buffer with 0.09% (w/v) sodium azide and 2% sucrose. <i>Note that this product is shipped as lyophilized powder to China customers.</i>
<b>Conjugation:</b>	Unconjugated
<b>Storage:</b>	Store at -20°C as received.
<b>Stability:</b>	Stable for 12 months from date of receipt.
<b>Predicted Protein Size:</b>	110 kDa
<b>Gene Name:</b>	neural precursor cell expressed, developmentally down-regulated 4-like, E3 ubiquitin protein ligase
<b>Database Link:</b>	<a href="#">NP_001138436</a> <a href="#">Entrez Gene 23327 Human</a> <a href="#">Q96PU5</a>
<b>Background:</b>	NEDD4L is an E3 ubiquitin-protein ligase which accepts ubiquitin from an E2 ubiquitin-conjugating enzyme in the form of a thioester and then directly transfers the ubiquitin to targeted substrates. NEDD4L inhibits TGF-beta signaling by triggering SMAD2 and TGFR1 ubiquitination and proteasome-dependent degradation. NEDD4L promotes ubiquitination and internalization of various plasma membrane channels such as ENaC, Nav1.2, Nav1.3, Nav1.5, Nav1.7, Nav1.8, Kv1.3, EAAT1 or CLC5. NEDD4L also promotes ubiquitination and degradation of SGK.



[View online »](#)

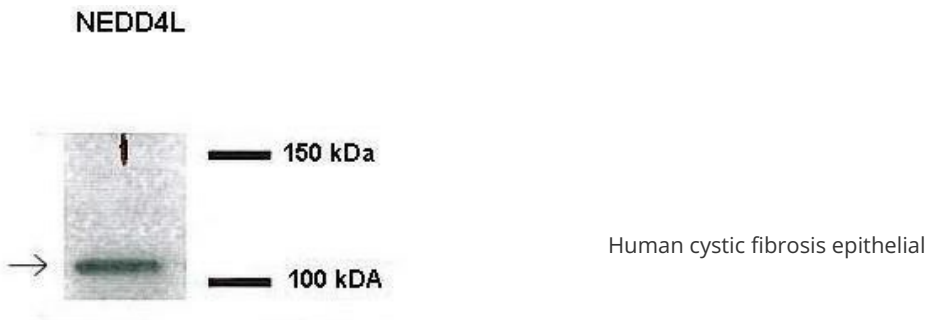
**Synonyms:** hNEDD4-2; NEDD4-2; NEDD4.2; RSP5

**Note:** Immunogen sequence homology: Dog: 100%; Pig: 100%; Rat: 100%; Horse: 100%; Human: 100%; Mouse: 100%; Bovine: 100%; Rabbit: 100%; Guinea pig: 100%; Zebrafish: 93%

**Protein Families:** Druggable Genome

**Protein Pathways:** Endocytosis, Ubiquitin mediated proteolysis

**Product images:**



See Immunoblot 2 Data and customer Feedback for more Information

