

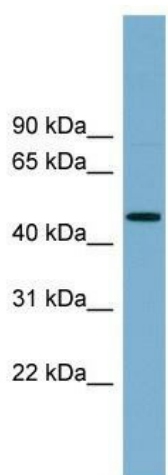
## Product datasheet for TA329847

### RNF44 Rabbit Polyclonal Antibody

#### Product data:

Product Type:	Primary Antibodies
Applications:	WB
Recommended Dilution:	WB
Reactivity:	Human
Host:	Rabbit
Isotype:	IgG
Clonality:	Polyclonal
Immunogen:	The immunogen for anti-RNF44 antibody: synthetic peptide directed towards the N terminal of human RNF44. Synthetic peptide located within the following region: LSYTVTTVTQTGGFPLPTGQHIPGCSAQQLPACSVMFSGQHYPLCCLPPPL
Formulation:	Liquid. Purified antibody supplied in 1x PBS buffer with 0.09% (w/v) sodium azide and 2% sucrose.
Conjugation:	Unconjugated
Storage:	Store at -20°C as received.
Stability:	Stable for 12 months from date of receipt.
Predicted Protein Size:	48 kDa
Gene Name:	ring finger protein 44
Database Link:	<a href="#">NP_055716</a> <a href="#">Entrez Gene 22838 Human</a> <a href="#">Q7L0R7</a>
Background:	The protein encoded by this gene contains a RING finger, a motif present in a variety of functionally distinct proteins and known to be involved in protein-protein and protein-DNA interactions.
Synonyms:	KIAA1100
Note:	Immunogen sequence homology: Dog: 100%; Pig: 100%; Rat: 100%; Human: 100%; Guinea pig: 100%; Horse: 93%; Mouse: 93%; Bovine: 93%; Zebrafish: 77%


[View online »](#)

**Product images:**

WB Suggested Anti-RNF44 Antibody Titration: 0.2-1 ug/ml; Positive Control: PANC1 cell lysate RNF44 is supported by BioGPS gene expression data to be expressed in PANC1