

Product datasheet for **TA329845**

RNF40 Rabbit Polyclonal Antibody

Product data:

Product Type:	Primary Antibodies
Applications:	IHC, WB
Recommended Dilution:	WB, IHC
Reactivity:	Human, Mouse
Host:	Rabbit
Isotype:	IgG
Clonality:	Polyclonal
Immunogen:	The immunogen for anti-RNF40 antibody: synthetic peptide directed towards the C terminal of human RNF40. Synthetic peptide located within the following region: KLLREEKDELGEQVLGLKSQVDAQLLTVQKLEEKERALQGSLGGVEKELT
Formulation:	Liquid. Purified antibody supplied in 1x PBS buffer with 0.09% (w/v) sodium azide and 2% sucrose.
Conjugation:	Unconjugated
Storage:	Store at -20°C as received.
Stability:	Stable for 12 months from date of receipt.
Predicted Protein Size:	114 kDa
Gene Name:	ring finger protein 40
Database Link:	NP_055586 Entrez Gene 9810 Human O75150



[View online »](#)

Background:

RNF40 contains a RING finger, a motif known to be involved in protein-protein and protein-DNA interactions. This protein was reported to interact with the tumor suppressor protein RB1. Studies of the rat counterpart suggested that this protein may function as an E3 ubiquitin-protein ligase, and facilitate the ubiquitination and degradation of syntaxin 1, which is an essential component of the neurotransmitter release machinery. The protein encoded by this gene contains a RING finger, a motif known to be involved in protein-protein and protein-DNA interactions. This protein was reported to interact with the tumor suppressor protein RB1. Studies of the rat counterpart suggested that this protein may function as an E3 ubiquitin-protein ligase, and facilitate the ubiquitination and degradation of syntaxin 1, which is an essential component of the neurotransmitter release machinery.

Synonyms:

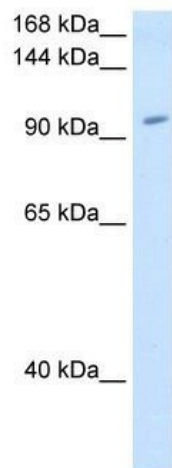
BRE1B; RBP95; STARING

Note:

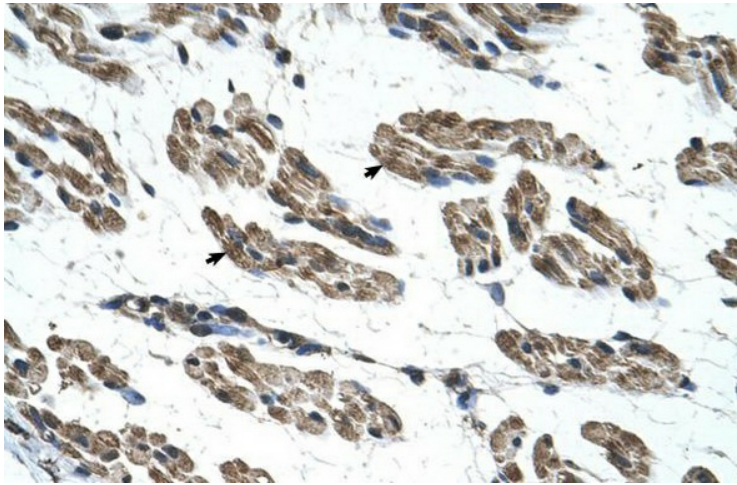
Immunogen sequence homology: Dog: 100%; Pig: 100%; Rat: 100%; Horse: 100%; Human: 100%; Mouse: 100%; Bovine: 100%; Rabbit: 100%; Guinea pig: 100%; Zebrafish: 85%

Protein Families:

Druggable Genome

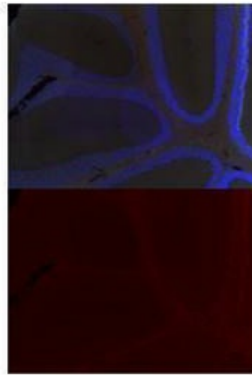
Product images:

WB Suggested Anti-RNF40 Antibody Titration:
1.25 ug/ml; Positive Control: 293T cell lysate
RNF40 is supported by BioGPS gene expression
data to be expressed in HEK293T



Human Muscle

RNF40



Red : RNF40
Blue: DAPI

Sample Type : Adult mouse cerebellum (10x) section
 Primary Antibody Dilution : 1:100
 Secondary Antibody : Donkey Anti-rabbit (568 nm)
 Secondary Antibody Dilution : 1:500
 Color/Signal Descriptions : RNF40: Red
 DAPI:Blue
 Gene Name : RNF40 Submitted by : Anonymo

See IHC 2 Data and Customer Feedback for more information