

## Product datasheet for **TA329844**

### UBE3C Rabbit Polyclonal Antibody

#### Product data:

Product Type:	Primary Antibodies
Applications:	WB
Recommended Dilution:	WB
Reactivity:	Human
Host:	Rabbit
Isotype:	IgG
Clonality:	Polyclonal
Immunogen:	The immunogen for Anti-UBE3C antibody is: synthetic peptide directed towards the N-terminal region of Human UBE3C. Synthetic peptide located within the following region: MFSFEGDFKTRPKVSLGGASRKYSIQRSADFRCATLSQSGGAFPIANGPN
Formulation:	Liquid. Purified antibody supplied in 1x PBS buffer with 0.09% (w/v) sodium azide and 2% sucrose. <i>Note that this product is shipped as lyophilized powder to China customers.</i>
Purification:	Affinity Purified
Conjugation:	Unconjugated
Storage:	Store at -20°C as received.
Stability:	Stable for 12 months from date of receipt.
Predicted Protein Size:	44 kDa
Gene Name:	ubiquitin protein ligase E3C
Database Link:	<a href="#">NP_055486</a> <a href="#">Entrez Gene 9690 Human Q15386</a>
Background:	E3 ubiquitin-protein ligase that accepts ubiquitin from the E2 ubiquitin-conjugating enzyme UBE2D1 in the form of a thioester and then directly transfers the ubiquitin to targeted substrates. UBE3C can assemble unanchored poly-ubiquitin chains in either 'Lys-29'- or 'Lys-48'-linked polyubiquitin chains. It has preference for 'Lys-48' linkages. It can target itself for ubiquitination in vitro and may promote its own degradation in vivo.
Synonyms:	HECTH2



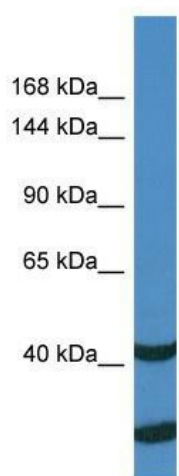
[View online »](#)

**Note:** Immunogen sequence homology: Dog: 100%; Pig: 100%; Rat: 100%; Human: 100%; Mouse: 100%; Bovine: 100%; Rabbit: 100%; Zebrafish: 100%; Guinea pig: 100%

**Protein Families:** Druggable Genome

**Protein Pathways:** Ubiquitin mediated proteolysis

### Product images:



Host: Rabbit; Target Name: UBE3C; Sample Tissue: THP-1 whole cell lysates; Antibody Dilution: 1.0 ug/ml