

Product datasheet for **TA329837**

HSPC150 (UBE2T) Rabbit Polyclonal Antibody

Product data:

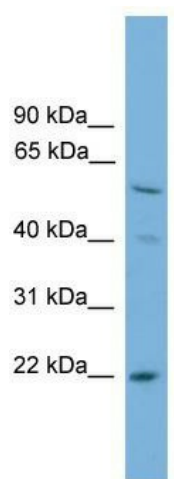
Product Type:	Primary Antibodies
Applications:	WB
Recommended Dilution:	WB
Reactivity:	Human
Host:	Rabbit
Isotype:	IgG
Clonality:	Polyclonal
Immunogen:	The immunogen for anti-UBE2T antibody: synthetic peptide directed towards the N terminal of human UBE2T. Synthetic peptide located within the following region: MQRASRLKRELHMLATEPPPGITCWQDKDQDDLRAQILGGANTPYEKGV
Formulation:	Liquid. Purified antibody supplied in 1x PBS buffer with 0.09% (w/v) sodium azide and 2% sucrose. <i>Note that this product is shipped as lyophilized powder to China customers.</i>
Conjugation:	Unconjugated
Storage:	Store at -20°C as received.
Stability:	Stable for 12 months from date of receipt.
Predicted Protein Size:	22 kDa
Gene Name:	ubiquitin conjugating enzyme E2 T
Database Link:	NP_054895 Entrez Gene 29089 Human Q9NPD8
Background:	The covalent conjugation of ubiquitin to proteins regulates diverse cellular pathways and proteins. Ubiquitin is transferred to a target protein through a concerted action of a ubiquitin-activating enzyme (E1), a ubiquitin-conjugating enzyme (E2), such as UBE2T, and a ubiquitin ligase (E3) (Machida et al., 2006 [PubMed 16916645]).
Synonyms:	FANCT; HSPC150; PIG50
Note:	Immunogen sequence homology: Pig: 100%; Rat: 100%; Human: 100%; Mouse: 100%; Bovine: 100%; Rabbit: 93%; Guinea pig: 93%; Zebrafish: 92%; Dog: 86%; Horse: 86%



[View online »](#)

Protein Families: Druggable Genome

Product images:



WB Suggested Anti-UBE2T Antibody Titration: 0.2-1 ug/ml; ELISA Titer: 1:62500; Positive Control: HepG2 cell lysate