

Product datasheet for **TA329831**

MYLIP Rabbit Polyclonal Antibody

Product data:

Product Type:	Primary Antibodies
Applications:	WB
Recommended Dilution:	WB
Reactivity:	Human
Host:	Rabbit
Isotype:	IgG
Clonality:	Polyclonal
Immunogen:	The immunogen for anti-MYLIP antibody: synthetic peptide directed towards the middle region of human MYLIP. Synthetic peptide located within the following region: CSSCEGLSCQQTRVLQEKLRKLKEAMLCMVCCEEEINSTFCPCGHTVCCE
Formulation:	Liquid. Purified antibody supplied in 1x PBS buffer with 0.09% (w/v) sodium azide and 2% sucrose. <i>Note that this product is shipped as lyophilized powder to China customers.</i>
Conjugation:	Unconjugated
Storage:	Store at -20°C as received.
Stability:	Stable for 12 months from date of receipt.
Predicted Protein Size:	50 kDa
Gene Name:	myosin regulatory light chain interacting protein
Database Link:	NP_037394 Entrez Gene 29116 Human Q8WY64
Background:	The ERM protein family members ezrin, radixin, and moesin are cytoskeletal effector proteins linking actin to membrane-bound proteins at the cell surface. Myosin regulatory light chain interacting protein (MYLIP) is a novel ERM-like protein that interacts with myosin regulatory light chain and inhibits neurite outgrowth. The ERM protein family members ezrin, radixin, and moesin are cytoskeletal effector proteins linking actin to membrane-bound proteins at the cell surface. Myosin regulatory light chain interacting protein (MYLIP) is a novel ERM-like protein that interacts with myosin regulatory light chain and inhibits neurite outgrowth.



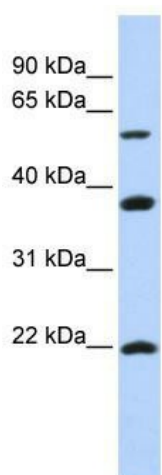
[View online »](#)

Synonyms: IDOL; MIR

Note: Immunogen sequence homology: Rat: 100%; Human: 100%; Mouse: 100%; Dog: 93%; Pig: 93%; Horse: 93%; Bovine: 93%; Rabbit: 93%; Guinea pig: 93%

Protein Families: Druggable Genome

Product images:



WB Suggested Anti-MYLIP Antibody Titration: 0.2-1 ug/ml; ELISA Titer: 1:1562500; Positive Control: SK-MEL-2 cell lysate