

## Product datasheet for **TA329829**

### FBXL7 Rabbit Polyclonal Antibody

#### Product data:

Product Type:	Primary Antibodies
Applications:	IHC, WB
Recommended Dilution:	WB, IHC
Reactivity:	Human
Host:	Rabbit
Isotype:	IgG
Clonality:	Polyclonal
Immunogen:	The immunogen for anti-FBXL7 antibody: synthetic peptide directed towards the N terminal of human FBXL7. Synthetic peptide located within the following region: IRLASRPQKEQASIDRLPDHSMVQIFSFLPTNQLCRCARVCRRWYNLAWD
Formulation:	Liquid. Purified antibody supplied in 1x PBS buffer with 0.09% (w/v) sodium azide and 2% sucrose. <i>Note that this product is shipped as lyophilized powder to China customers.</i>
Conjugation:	Unconjugated
Storage:	Store at -20°C as received.
Stability:	Stable for 12 months from date of receipt.
Predicted Protein Size:	54 kDa
Gene Name:	F-box and leucine-rich repeat protein 7
Database Link:	<a href="#">NP_036436</a> <a href="#">Entrez Gene 23194 Human</a> <a href="#">Q9UJT9</a>



[View online »](#)

**Background:**

FBXL7 is a member of the F-box protein family which is characterized by an approximately 40 amino acid motif, the F-box. The F-box proteins constitute one of the four subunits of ubiquitin protein ligase complex called SCFs (SKP1-cullin-F-box), which function in phosphorylation-dependent ubiquitination. The F-box proteins are divided into 3 classes: Fbws containing WD-40 domains, Fbls containing leucine-rich repeats, and Fbxs containing either different protein-protein interaction modules or no recognizable motifs. The protein belongs to the Fbls class and, in addition to an F-box, contains several tandem leucine-rich repeats. This gene encodes a member of the F-box protein family which is characterized by an approximately 40 amino acid motif, the F-box. The F-box proteins constitute one of the four subunits of ubiquitin protein ligase complex called SCFs (SKP1-cullin-F-box), which function in phosphorylation-dependent ubiquitination. The F-box proteins are divided into 3 classes: Fbws containing WD-40 domains, Fbls containing leucine-rich repeats, and Fbxs containing either different protein-protein interaction modules or no recognizable motifs. The protein encoded by this gene belongs to the Fbls class and, in addition to an F-box, contains several tandem leucine-rich repeats.

**Synonyms:**

FBL6; FBL7

**Note:**

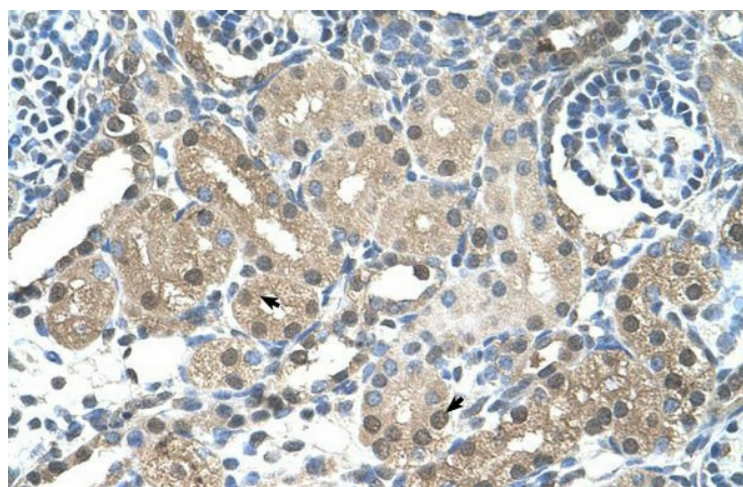
Immunogen sequence homology: Pig: 100%; Rat: 100%; Human: 100%; Mouse: 100%; Guinea pig: 100%; Horse: 93%; Bovine: 92%; Rabbit: 92%

**Protein Families:**

Druggable Genome

**Product images:**

WB Suggested Anti-FBXL7 Antibody Titration: 1.25 ug/ml; Positive Control: HepG2 cell lysate



Human kidney