

Product datasheet for **TA329822**

FBXO25 Rabbit Polyclonal Antibody

Product data:

Product Type:	Primary Antibodies
Applications:	IHC, WB
Recommended Dilution:	WB, IHC
Reactivity:	Human
Host:	Rabbit
Isotype:	IgG
Clonality:	Polyclonal
Immunogen:	The immunogen for anti-FBXO25 antibody: synthetic peptide directed towards the C terminal of human FBXO25. Synthetic peptide located within the following region: AKEQYGDTLHF CRHCSILFWKDSGHPCTAADPDS CFTPSPQHFIDLFKF
Formulation:	Liquid. Purified antibody supplied in 1x PBS buffer with 0.09% (w/v) sodium azide and 2% sucrose. <i>Note that this product is shipped as lyophilized powder to China customers.</i>
Conjugation:	Unconjugated
Storage:	Store at -20°C as received.
Stability:	Stable for 12 months from date of receipt.
Predicted Protein Size:	16 kDa
Gene Name:	F-box protein 25
Database Link:	NP_036305 Entrez Gene 26260 Human Q8TCJ0
Background:	FBXO25 is a member of the F-box protein family which is characterized by an approximately 40 amino acid motif, the F-box. The F-box proteins constitute one of the four subunits of ubiquitin protein ligase complex called SCFs (SKP1-cullin-F-box), which function in phosphorylation-dependent ubiquitination. The F-box proteins are divided into 3 classes: Fbws containing WD-40 domains, Fbls containing leucine-rich repeats, and Fbxs containing either different protein-protein interaction modules or no recognizable motifs. FBXO25 belongs to the Fbxs class.

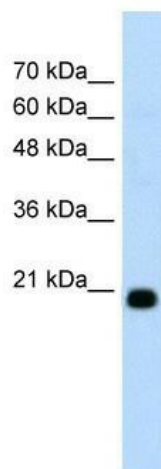


[View online »](#)

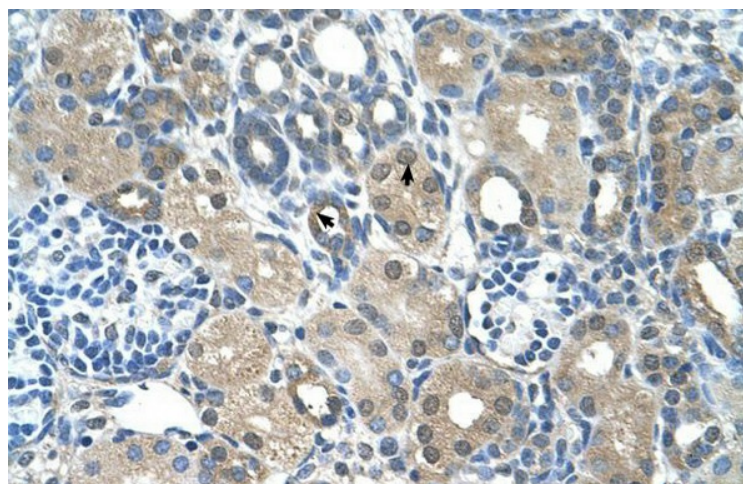
Synonyms: FBX25

Note: Immunogen sequence homology: Dog: 100%; Pig: 100%; Rat: 100%; Horse: 100%; Human: 100%; Zebrafish: 100%; Guinea pig: 100%; Mouse: 93%; Bovine: 93%; Rabbit: 93%

Product images:



WB Suggested Anti-FBXO25 Antibody Titration:
1.25ug/ml; Positive Control: HepG2 cell lysate



Human kidney