

Product datasheet for **TA329821**

FBXO25 Rabbit Polyclonal Antibody

Product data:

Product Type:	Primary Antibodies
Applications:	WB
Recommended Dilution:	WB
Reactivity:	Human
Host:	Rabbit
Isotype:	IgG
Clonality:	Polyclonal
Immunogen:	The immunogen for anti-FBXO25 antibody: synthetic peptide directed towards the N terminal of human FBXO25. Synthetic peptide located within the following region: LGEAFNRLDFSSAIQDIRRFNYVVKLLQLIAKSQLTSLSGVAQKNYFNIL
Formulation:	Liquid. Purified antibody supplied in 1x PBS buffer with 0.09% (w/v) sodium azide and 2% sucrose. <i>Note that this product is shipped as lyophilized powder to China customers.</i>
Conjugation:	Unconjugated
Storage:	Store at -20°C as received.
Stability:	Stable for 12 months from date of receipt.
Predicted Protein Size:	34 kDa
Gene Name:	F-box protein 25
Database Link:	NP_036305 Entrez Gene 26260 Human Q8TCJ0



[View online »](#)

Background:

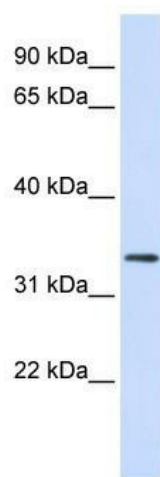
FBXO25 is a member of the F-box protein family which is characterized by an approximately 40 amino acid motif, the F-box. The F-box proteins constitute one of the four subunits of ubiquitin protein ligase complex called SCFs (SKP1-cullin-F-box), which function in phosphorylation-dependent ubiquitination. The F-box proteins are divided into 3 classes: Fbws containing WD-40 domains, Fbls containing leucine-rich repeats, and Fbxs containing either different protein-protein interaction modules or no recognizable motifs. The protein belongs to the Fbxs class. Three alternatively spliced transcript variants encoding distinct isoforms have been found for this gene. This gene encodes a member of the F-box protein family which is characterized by an approximately 40 amino acid motif, the F-box. The F-box proteins constitute one of the four subunits of ubiquitin protein ligase complex called SCFs (SKP1-cullin-F-box), which function in phosphorylation-dependent ubiquitination. The F-box proteins are divided into 3 classes: Fbws containing WD-40 domains, Fbls containing leucine-rich repeats, and Fbxs containing either different protein-protein interaction modules or no recognizable motifs. The protein encoded by this gene belongs to the Fbxs class. Three alternatively spliced transcript variants encoding distinct isoforms have been found for this gene.

Synonyms:

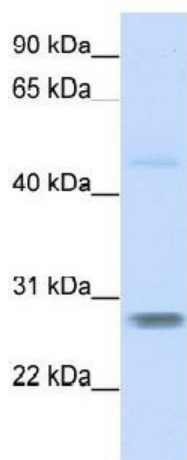
FBX25

Note:

Immunogen sequence homology: Pig: 100%; Horse: 100%; Human: 100%; Bovine: 100%; Dog: 93%; Rat: 93%; Mouse: 93%; Rabbit: 93%; Zebrafish: 93%; Guinea pig: 93%

Product images:

WB Suggested Anti-FBXO25 Antibody Titration:
0.2-1 ug/ml; ELISA Titer: 1:312500; Positive
Control: Human heart



WB Suggested Anti-FBXO25 Antibody Titration:
0.2-1 ug/ml; ELISA Titer: 1:312500; Positive
Control: Human Brain