

Product datasheet for **TA329816**

FBXL5 Rabbit Polyclonal Antibody

Product data:

Product Type:	Primary Antibodies
Applications:	WB
Recommended Dilution:	WB
Reactivity:	Human
Host:	Rabbit
Isotype:	IgG
Clonality:	Polyclonal
Immunogen:	The immunogen for anti-FBXL5 antibody: synthetic peptide directed towards the middle region of human FBXL5. Synthetic peptide located within the following region: LRTMSSLPESSAMCRKAARTRLPKDLIYFGSEKSDQETGRVLLFSLLS
Formulation:	Liquid. Purified antibody supplied in 1x PBS buffer with 0.09% (w/v) sodium azide and 2% sucrose. <i>Note that this product is shipped as lyophilized powder to China customers.</i>
Conjugation:	Unconjugated
Storage:	Store at -20°C as received.
Stability:	Stable for 12 months from date of receipt.
Predicted Protein Size:	63 kDa
Database Link:	NP_277077 Entrez Gene 26234 Human
Background:	FBXL5 is a member of the F-box protein family which is characterized by an approximately 40 amino acid motif, the F-box. The F-box proteins constitute one of the four subunits of ubiquitin protein ligase complex called SCFs (SKP1-cullin-F-box), which function in phosphorylation-dependent ubiquitination. The F-box proteins are divided into 3 classes: Fbws containing WD-40 domains, Fbls containing leucine-rich repeats, and Fbxs containing either different protein-protein interaction modules or no recognizable motifs. FBXL5 belongs to the Fbls class and, in addition to an F-box, contains several tandem leucine-rich repeats.
Synonyms:	F-box and leucine-rich repeat protein 5; F-box protein FBL5; FBL4; FBL5; FLR1

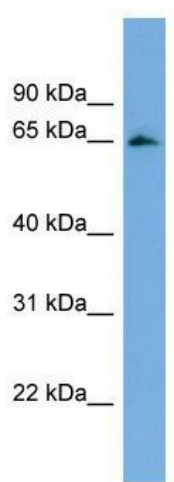


[View online »](#)

Note: Immunogen sequence homology: Pig: 100%; Rat: 100%; Human: 100%; Mouse: 100%; Rabbit: 100%; Guinea pig: 100%; Dog: 93%; Horse: 93%; Bovine: 93%

Protein Families: Druggable Genome

Product images:



WB Suggested Anti-FBXL5 Antibody Titration: 0.2-1 ug/ml; Positive Control: THP-1 cell lysate