

Product datasheet for **TA329810**

UBE2C Rabbit Polyclonal Antibody

Product data:

Product Type:	Primary Antibodies
Applications:	WB
Recommended Dilution:	WB
Reactivity:	Human
Host:	Rabbit
Isotype:	IgG
Clonality:	Polyclonal
Immunogen:	The immunogen for anti-UBE2C antibody: synthetic peptide directed towards the N terminal of human UBE2C. Synthetic peptide located within the following region: ELMTLMMSGDKGISAFPESDNLFKWWGTIHGAAGTVYEDLRYKLSLEFPS
Formulation:	Liquid. Purified antibody supplied in 1x PBS buffer with 0.09% (w/v) sodium azide and 2% sucrose. <i>Note that this product is shipped as lyophilized powder to China customers.</i>
Conjugation:	Unconjugated
Storage:	Store at -20°C as received.
Stability:	Stable for 12 months from date of receipt.
Predicted Protein Size:	20 kDa
Gene Name:	ubiquitin conjugating enzyme E2 C
Database Link:	NP_008950 Entrez Gene 11065 Human O00762



[View online »](#)

Background:

The modification of proteins with ubiquitin is an important cellular mechanism for targeting abnormal or short-lived proteins for degradation. Ubiquitination involves at least three classes of enzymes: ubiquitin-activating enzymes, or E1s, ubiquitin-conjugating enzymes, or E2s, and ubiquitin-protein ligases, or E3s. UBE2C is a member of the E2 ubiquitin-conjugating enzyme family. This enzyme is required for the destruction of mitotic cyclins and for cell cycle progression. The modification of proteins with ubiquitin is an important cellular mechanism for targeting abnormal or short-lived proteins for degradation. Ubiquitination involves at least three classes of enzymes: ubiquitin-activating enzymes, or E1s, ubiquitin-conjugating enzymes, or E2s, and ubiquitin-protein ligases, or E3s. This gene encodes a member of the E2 ubiquitin-conjugating enzyme family. This enzyme is required for the destruction of mitotic cyclins and for cell cycle progression. Multiple alternatively spliced transcript variants have been found for this gene, but the full-length nature of some variants has not been defined.

Synonyms:

dj447F3.2; UBCH10

Note:

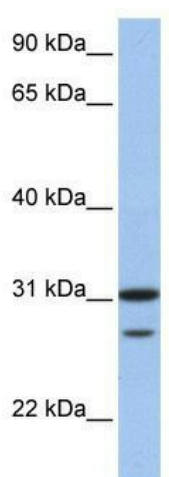
Immunogen sequence homology: Dog: 100%; Pig: 100%; Rat: 100%; Horse: 100%; Human: 100%; Mouse: 100%; Bovine: 100%; Rabbit: 100%; Zebrafish: 100%; Guinea pig: 100%

Protein Families:

Druggable Genome

Protein Pathways:

Ubiquitin mediated proteolysis

Product images:

WB Suggested Anti-UBE2C Antibody Titration: 0.2-1 ug/ml; Positive Control: Human Muscle