

Product datasheet for **TA329808**

WWP2 Rabbit Polyclonal Antibody

Product data:

Product Type:	Primary Antibodies
Applications:	IHC, WB
Recommended Dilution:	WB, IHC
Reactivity:	Human
Host:	Rabbit
Isotype:	IgG
Clonality:	Polyclonal
Immunogen:	The immunogen for anti-WWP2 antibody: synthetic peptide directed towards the middle region of human WWP2. Synthetic peptide located within the following region: EMKYTSEGVRYFVDHNTRTTTFKDPRPGFESGTKQGSPGAYDRSFRWKYH
Formulation:	Liquid. Purified antibody supplied in 1x PBS buffer with 0.09% (w/v) sodium azide and 2% sucrose. <i>Note that this product is shipped as lyophilized powder to China customers.</i>
Conjugation:	Unconjugated
Storage:	Store at -20°C as received.
Stability:	Stable for 12 months from date of receipt.
Predicted Protein Size:	47 kDa
Gene Name:	WW domain containing E3 ubiquitin protein ligase 2
Database Link:	NP_955456 Entrez Gene 11060 Human O00308



[View online »](#)

Background:

WWP2 is a member of the NEDD4-like protein family. The family of proteins is known to possess ubiquitin-protein ligase activity. WWP2 contains 4 tandem WW domains. The WW domain is a protein motif consisting of 35 to 40 amino acids and is characterized by 4 conserved aromatic residues. The WW domain may mediate specific protein-protein interactions. This gene encodes a member of the NEDD4-like protein family. The family of proteins is known to possess ubiquitin-protein ligase activity. The encoded protein contains 4 tandem WW domains. The WW domain is a protein motif consisting of 35 to 40 amino acids and is characterized by 4 conserved aromatic residues. The WW domain may mediate specific protein-protein interactions. Three alternatively spliced transcript variants encoding distinct isoforms have been found for this gene.

Synonyms:

AIP2; WWp2-like

Note:

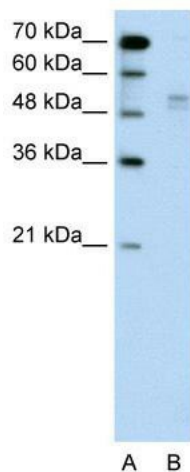
Immunogen sequence homology: Dog: 100%; Pig: 100%; Human: 100%; Mouse: 100%; Sheep: 100%; Bovine: 100%; Rabbit: 100%; Guinea pig: 100%; Rat: 93%; Horse: 93%; Zebrafish: 80%

Protein Families:

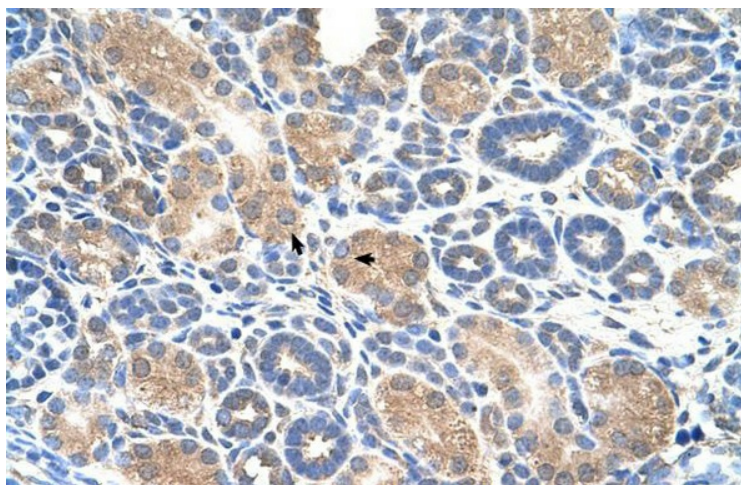
Druggable Genome

Protein Pathways:

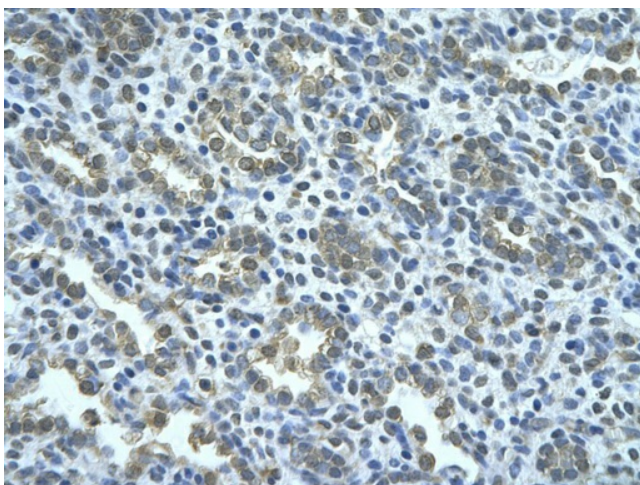
Ubiquitin mediated proteolysis

Product images:

WB Suggested Anti-WWP2 Antibody Titration: 0.2-1 ug/ml; Positive Control: Jurkat cell lysate WWP2 is supported by BioGPS gene expression data to be expressed in Jurkat



Human kidney



Rabbit Anti-WWP2 Antibody; Paraffin Embedded
Tissue: Human alveolar cell; Cellular Data:
Epithelial cells of renal tubule; Antibody
Concentration: 4.0-8.0 ug/ml; Magnification: 400X