

Product datasheet for **TA329805**

WWP1 Rabbit Polyclonal Antibody

Product data:

Product Type:	Primary Antibodies
Applications:	IHC, WB
Recommended Dilution:	WB, IHC
Reactivity:	Human
Host:	Rabbit
Isotype:	IgG
Clonality:	Polyclonal
Immunogen:	The immunogen for anti-WWP1 antibody: synthetic peptide directed towards the N terminal of human WWP1. Synthetic peptide located within the following region: ATASPRSDTSNNHSGRLQLQVTVSSAKLKRKKNWFGTAIYTEVVVDGEIT
Formulation:	Liquid. Purified antibody supplied in 1x PBS buffer with 0.09% (w/v) sodium azide and 2% sucrose. <i>Note that this product is shipped as lyophilized powder to China customers.</i>
Conjugation:	Unconjugated
Storage:	Store at -20°C as received.
Stability:	Stable for 12 months from date of receipt.
Predicted Protein Size:	105 kDa
Gene Name:	WW domain containing E3 ubiquitin protein ligase 1
Database Link:	NP_008944 Entrez Gene 11059 Human Q9H0M0



[View online »](#)

Background:

WW domain-containing proteins are found in all eukaryotes and play an important role in the regulation of a wide variety of cellular functions such as protein degradation, transcription, and RNA splicing. WWP1 is a protein which contains 4 tandem WW domains and a HECT (homologous to the E6-associated protein carboxyl terminus) domain. WWP1 belongs to a family of NEDD4-like proteins, which are E3 ubiquitin-ligase molecules and regulate key trafficking decisions, including targeting of proteins to proteosomes or lysosomes. WW domain-containing proteins are found in all eukaryotes and play an important role in the regulation of a wide variety of cellular functions such as protein degradation, transcription, and RNA splicing. This gene encodes a protein which contains 4 tandem WW domains and a HECT (homologous to the E6-associated protein carboxyl terminus) domain. The encoded protein belongs to a family of NEDD4-like proteins, which are E3 ubiquitin-ligase molecules and regulate key trafficking decisions, including targeting of proteins to proteosomes or lysosomes. Alternative splicing of this gene generates at least 6 transcript variants; however, the full length nature of these transcripts has not been defined. Publication Note: This RefSeq record includes a subset of the publications that are available for this gene. Please see the Entrez Gene record to access additional publications.

Synonyms:

AIP5; hSDRP1; Tiul1

Note:

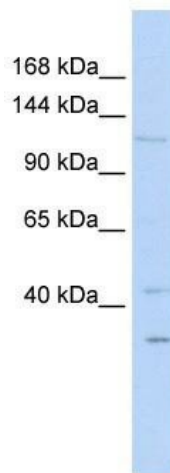
Immunogen sequence homology: Dog: 100%; Rat: 100%; Human: 100%; Bovine: 100%; Rabbit: 100%; Pig: 93%; Horse: 93%; Mouse: 86%; Guinea pig: 86%

Protein Families:

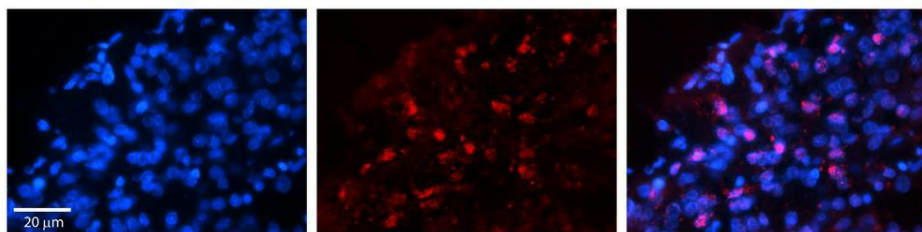
Transcription Factors

Protein Pathways:

Endocytosis, Ubiquitin mediated proteolysis

Product images:

WB Suggested Anti-WWP1 Antibody Titration: 0.2-1 ug/ml; ELISA Titer: 1:312500; Positive Control: 293T cell lysate. WWP1 is supported by BioGPS gene expression data to be expressed in HEK293T



Rabbit Anti-WWP1 Antibody; Formalin Fixed Paraffin Embedded Tissue: Human Pineal Tissue; Observed Staining: Nuclear in pinealocytes; Primary Antibody Concentration: 1:100; Secondary Antibody: Donkey anti-Rabbit-Cy3; Secondary Antibody Concentration: 1:200