

Product datasheet for **TA329803**

Retinoblastoma binding protein 6 (RBBP6) Rabbit Polyclonal Antibody

Product data:

Product Type:	Primary Antibodies
Applications:	WB
Recommended Dilution:	WB
Reactivity:	Human
Host:	Rabbit
Isotype:	IgG
Clonality:	Polyclonal
Immunogen:	The immunogen for Anti-RBBP6 antibody is: synthetic peptide directed towards the N-terminal region of Human RBBP6. Synthetic peptide located within the following region: NYDVTVFDGLHISLCDLKKQIMGREKLKAADCDLQITNAQTKEEYTDNA
Formulation:	Liquid. Purified antibody supplied in 1x PBS buffer with 0.09% (w/v) sodium azide and 2% sucrose.
Purification:	Affinity Purified
Conjugation:	Unconjugated
Storage:	Store at -20°C as received.
Stability:	Stable for 12 months from date of receipt.
Predicted Protein Size:	104 kDa
Gene Name:	RB binding protein 6, ubiquitin ligase
Database Link:	NP_116015 Entrez Gene 5930 Human Q7Z6E9
Background:	The retinoblastoma tumor suppressor (pRB) protein binds with many other proteins. In various human cancers, pRB suppresses cellular proliferation and is inactivated. Cell cycle-dependent phosphorylation regulates the activity of pRB. This gene encodes a protein which binds to underphosphorylated but not phosphorylated pRB. Multiple alternatively spliced transcript variants that encode different isoforms have been found for this gene. [provided by RefSeq, Jul 2008]
Synonyms:	MY038; P2P-R; PACT; RBQ-1; SNAMA

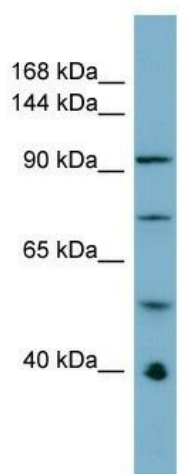


[View online »](#)

Note: Immunogen sequence homology: Dog: 100%; Pig: 100%; Rat: 100%; Horse: 100%; Human: 100%; Mouse: 100%; Bovine: 100%; Rabbit: 100%; Zebrafish: 93%

Protein Families: Druggable Genome

Product images:



Host: Rabbit; Target Name: RBBP6; Sample Tissue: ACHN Whole cell lysates; Antibody Dilution: 1.0ug/ml