

Product datasheet for **TA329802**

BRAP Rabbit Polyclonal Antibody

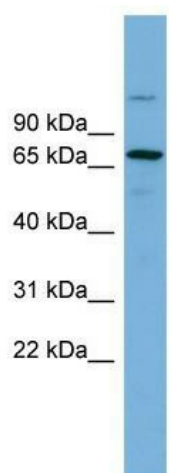
Product data:

Product Type:	Primary Antibodies
Applications:	WB
Recommended Dilution:	WB
Reactivity:	Human
Host:	Rabbit
Isotype:	IgG
Clonality:	Polyclonal
Immunogen:	The immunogen for anti-BRAP antibody: synthetic peptide directed towards the middle region of human BRAP. Synthetic peptide located within the following region: YLETQQKINHLPAETRQEIQEGQINIAMASASSPASSGGSGKLP SRKGRS
Formulation:	Liquid. Purified antibody supplied in 1x PBS buffer with 0.09% (w/v) sodium azide and 2% sucrose.
Conjugation:	Unconjugated
Storage:	Store at -20°C as received.
Stability:	Stable for 12 months from date of receipt.
Predicted Protein Size:	67 kDa
Gene Name:	BRCA1 associated protein
Database Link:	NP_006759 Entrez Gene 8315 Human Q7Z569
Background:	The protein encoded by this gene was identified by its ability to bind to the nuclear localization signal of BRCA1 and other proteins. It is a cytoplasmic protein which may regulate nuclear targeting by retaining proteins with a nuclear localization signal in the cytoplasm.
Synonyms:	BRAP2; IMP; RNF52
Note:	Immunogen sequence homology: Dog: 100%; Horse: 100%; Human: 100%; Mouse: 100%; Bovine: 100%; Rat: 93%; Rabbit: 93%; Zebrafish: 93%; Pig: 86%; Guinea pig: 86%
Protein Families:	Druggable Genome



[View online »](#)

Product images:



WB Suggested Anti-BRAP Antibody Titration: 0.2-1 ug/ml; ELISA Titer: 1:312500; Positive Control: NCI-H226 cell lysate