

Product datasheet for **TA329799**

Nkx2.2 (NKX2-2) Rabbit Polyclonal Antibody

Product data:

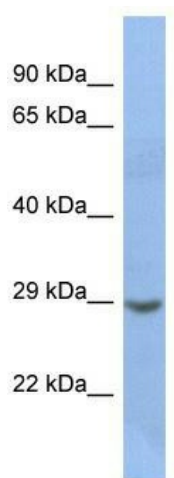
Product Type:	Primary Antibodies
Applications:	WB
Recommended Dilution:	WB
Reactivity:	Human
Host:	Rabbit
Isotype:	IgG
Clonality:	Polyclonal
Immunogen:	The immunogen for Anti-NKX2-2 antibody is: synthetic peptide directed towards the N-terminal region of Human NKX2-2. Synthetic peptide located within the following region: GLAAGAPPQDSSSKSPEPSADESPDNDKETPGGGGDAGKKRKRRLFSKA
Formulation:	Liquid. Purified antibody supplied in 1x PBS buffer with 0.09% (w/v) sodium azide and 2% sucrose. <i>Note that this product is shipped as lyophilized powder to China customers.</i>
Conjugation:	Unconjugated
Storage:	Store at -20°C as received.
Stability:	Stable for 12 months from date of receipt.
Predicted Protein Size:	30 kDa
Gene Name:	NK2 homeobox 2
Database Link:	NP_002500 Entrez Gene 4821 Human O95096
Background:	Nkx2-2 contains 1 homeobox DNA-binding domain which is essential for interaction with OLIG2. Nkx2-2 may be involved in specifying diencephalic neuromeric boundaries, and in controlling the expression of genes that play a role in axonal guidance.
Synonyms:	NKX2.2; NKX2B
Note:	Immunogen sequence homology: Dog: 100%; Pig: 100%; Rat: 100%; Horse: 100%; Human: 100%; Sheep: 100%; Bovine: 100%; Rabbit: 100%; Mouse: 93%; Guinea pig: 86%
Protein Families:	Transcription Factors



[View online »](#)

Protein Pathways: Maturity onset diabetes of the young

Product images:



Host: Rabbit; Target Name: NKX2-2; Sample Tissue: Jurkat Whole Cell lysates; Antibody Dilution: 1.0ug/ml