

Product datasheet for **TA329797**

MFSD8 Rabbit Polyclonal Antibody

Product data:

Product Type:	Primary Antibodies
Applications:	WB
Recommended Dilution:	WB
Reactivity:	Human
Host:	Rabbit
Isotype:	IgG
Clonality:	Polyclonal
Immunogen:	The immunogen for anti-MFSD8 antibody: synthetic peptide directed towards the middle region of human MFSD8. Synthetic peptide located within the following region: FFILLPWGNQFPKIQWEDLHNNNSIPNTTFGEIIIIGLWKSPMEDDNERPTG
Formulation:	Liquid. Purified antibody supplied in 1x PBS buffer with 0.09% (w/v) sodium azide and 2% sucrose. <i>Note that this product is shipped as lyophilized powder to China customers.</i>
Purification:	Affinity Purified
Conjugation:	Unconjugated
Storage:	Store at -20°C as received.
Stability:	Stable for 12 months from date of receipt.
Predicted Protein Size:	57 kDa
Gene Name:	major facilitator superfamily domain containing 8
Database Link:	NP_689991 Entrez Gene 256471 Human Q8NHS3
Background:	This gene encodes a ubiquitous integral membrane protein that contains a transporter domain and a major facilitator superfamily (MFS) domain. Other members of the major facilitator superfamily transport small solutes through chemiosmotic ion gradients. The substrate transported by this protein is unknown. The protein likely localizes to lysosomal membranes. Mutations in this gene are correlated with a variant form of late infantile-onset neuronal ceroid lipofuscinoses (vLINCL).



[View online »](#)

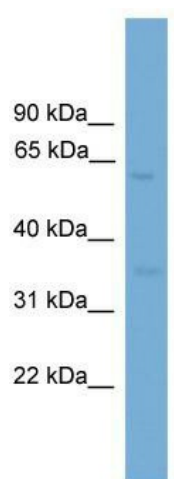
Synonyms: CCMD; CLN7

Note: Immunogen sequence homology: Rat: 100%; Human: 100%; Rabbit: 100%; Dog: 93%; Pig: 93%; Horse: 93%; Mouse: 93%; Bovine: 93%; Guinea pig: 93%

Protein Families: Transmembrane

Protein Pathways: Lysosome

Product images:



WB Suggested Anti-MFSD8 Antibody Titration:
0.2-1 ug/ml; ELISA Titer: 1:312500; Positive
Control: HepG2 cell lysate