

## Product datasheet for **TA329796**

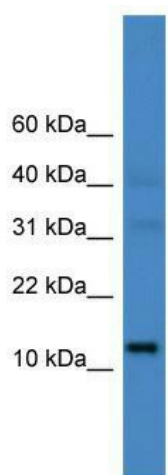
### **C14orf48 (LINC00521) Rabbit Polyclonal Antibody**

#### **Product data:**

<b>Product Type:</b>	Primary Antibodies
<b>Applications:</b>	WB
<b>Recommended Dilution:</b>	WB
<b>Reactivity:</b>	Human
<b>Host:</b>	Rabbit
<b>Isotype:</b>	IgG
<b>Clonality:</b>	Polyclonal
<b>Immunogen:</b>	The immunogen for anti-C14orf48 antibody: synthetic peptide directed towards the N terminal of human C14orf48. Synthetic peptide located within the following region: MDTGQRADPSNPGDKEGDLQGLWQELYQLQAKQKCLKREVEKHKLFEDYL
<b>Formulation:</b>	Liquid. Purified antibody supplied in 1x PBS buffer with 0.09% (w/v) sodium azide and 2% sucrose. <i>Note that this product is shipped as lyophilized powder to China customers.</i>
<b>Purification:</b>	Affinity Purified
<b>Conjugation:</b>	Unconjugated
<b>Storage:</b>	Store at -20°C as received.
<b>Stability:</b>	Stable for 12 months from date of receipt.
<b>Predicted Protein Size:</b>	16 kDa
<b>Gene Name:</b>	long intergenic non-protein coding RNA 521
<b>Database Link:</b>	<a href="#">NP_689990</a> <a href="#">Entrez Gene 256369 Human</a>
<b>Background:</b>	The function of C14orf48 remains unknown.
<b>Synonyms:</b>	c14_5713; MGC33356
<b>Note:</b>	Immunogen sequence homology: Human: 100%



[View online »](#)

**Product images:**

WB Suggested Anti-C14orf48 Antibody Titration:  
0.2-1 ug/ml; ELISA Titer: 1:12500; Positive Control:  
MCF7 cell lysate