

Product datasheet for **TA329795**

CCDC110 Rabbit Polyclonal Antibody

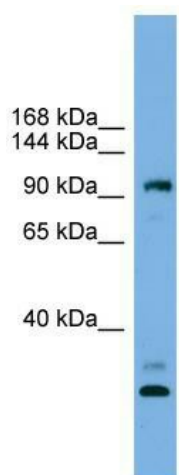
Product data:

Product Type:	Primary Antibodies
Applications:	WB
Recommended Dilution:	WB
Reactivity:	Human
Host:	Rabbit
Isotype:	IgG
Clonality:	Polyclonal
Immunogen:	The immunogen for anti-CCDC110 antibody: synthetic peptide directed towards the middle region of human CCDC110. Synthetic peptide located within the following region: KEELKKHSQENIKFENSISRLTEDKILLENYVRSIENERDTLEFEMRHLQ
Formulation:	Liquid. Purified antibody supplied in 1x PBS buffer with 0.09% (w/v) sodium azide and 2% sucrose.
Purification:	Affinity Purified
Conjugation:	Unconjugated
Storage:	Store at -20°C as received.
Stability:	Stable for 12 months from date of receipt.
Predicted Protein Size:	97 kDa
Gene Name:	coiled-coil domain containing 110
Database Link:	NP_689988 Entrez Gene 256309 Human Q8TBZ0
Background:	The function of this protein remains unknown.
Synonyms:	CT52; KM-HN-1; KMHN1
Note:	Immunogen sequence homology: Human: 100%; Mouse: 100%; Rabbit: 100%; Pig: 93%; Rat: 93%; Bovine: 93%; Guinea pig: 93%; Horse: 92%; Dog: 86%



[View online »](#)

Product images:



WB Suggested Anti-CCDC110 Antibody Titration:
0.2-1 ug/ml; ELISA Titer: 1:1562500; Positive
Control: Hela cell lysate