

Product datasheet for **TA329794**

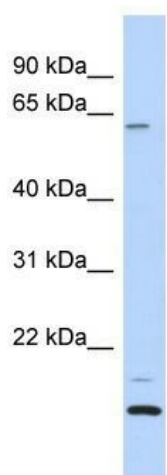
TCP11L2 Rabbit Polyclonal Antibody

Product data:

Product Type:	Primary Antibodies
Applications:	WB
Recommended Dilution:	WB
Reactivity:	Human
Host:	Rabbit
Isotype:	IgG
Clonality:	Polyclonal
Immunogen:	The immunogen for anti-TCP11L2 antibody: synthetic peptide directed towards the N terminal of human TCP11L2. Synthetic peptide located within the following region: VHQAFWDVLDSELNADPPEFEHAIKLFEEIREILLSFLTPGGNRLRNQIC
Formulation:	Liquid. Purified antibody supplied in 1x PBS buffer with 0.09% (w/v) sodium azide and 2% sucrose. <i>Note that this product is shipped as lyophilized powder to China customers.</i>
Purification:	Affinity Purified
Conjugation:	Unconjugated
Storage:	Store at -20°C as received.
Stability:	Stable for 12 months from date of receipt.
Predicted Protein Size:	58 kDa
Gene Name:	t-complex 11 like 2
Database Link:	NP_689985 Entrez Gene 255394 Human Q8N4U5
Background:	The specific function of TCP11L2 is not yet known.
Synonyms:	MGC40368
Note:	Immunogen sequence homology: Dog: 100%; Pig: 100%; Horse: 100%; Human: 100%; Bovine: 100%; Rabbit: 100%; Guinea pig: 93%; Rat: 86%; Mouse: 86%; Zebrafish: 79%
Protein Families:	Druggable Genome



[View online »](#)

Product images:

WB Suggested Anti-TCP11L2 Antibody Titration:
0.2-1 ug/ml; ELISA Titer: 1:312500; Positive
Control: Human Fetal heart