

Product datasheet for **TA329792**

C16orf73 (MEIOB) Rabbit Polyclonal Antibody

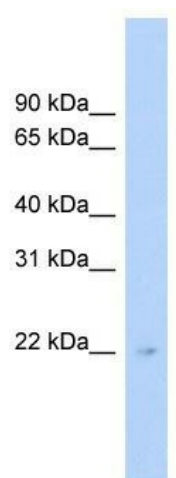
Product data:

Product Type:	Primary Antibodies
Applications:	WB
Recommended Dilution:	WB
Reactivity:	Human
Host:	Rabbit
Isotype:	IgG
Clonality:	Polyclonal
Immunogen:	The immunogen for anti-C16orf73 antibody: synthetic peptide directed towards the middle region of human C16orf73. Synthetic peptide located within the following region: CSLTGSAEETLGCTFVLSHRARSGLKISVLSCKLADPTEASRNLSGQKH
Formulation:	Liquid. Purified antibody supplied in 1x PBS buffer with 0.09% (w/v) sodium azide and 2% sucrose. <i>Note that this product is shipped as lyophilized powder to China customers.</i>
Purification:	Affinity Purified
Conjugation:	Unconjugated
Storage:	Store at -20°C as received.
Stability:	Stable for 12 months from date of receipt.
Predicted Protein Size:	22 kDa
Gene Name:	meiosis specific with OB domains
Database Link:	NP_689977 Entrez Gene 254528 Human Q8N635
Background:	The function of this protein remains unknown.
Synonyms:	C16orf73; gs129
Note:	Immunogen sequence homology: Human: 100%; Rat: 92%; Horse: 92%; Dog: 91%; Pig: 86%; Guinea pig: 86%; Bovine: 83%; Mouse: 79%; Rabbit: 79%



[View online »](#)

Product images:



WB Suggested Anti-C16orf73 Antibody Titration:
0.2-1 ug/ml; Positive Control: Human Liver