

Product datasheet for **TA329788**

YTHDF3 Rabbit Polyclonal Antibody

Product data:

Product Type:	Primary Antibodies
Applications:	WB
Recommended Dilution:	WB
Reactivity:	Human
Host:	Rabbit
Isotype:	IgG
Clonality:	Polyclonal
Immunogen:	The immunogen for anti-YTHDF3 antibody: synthetic peptide directed towards the N terminal of human YTHDF3. Synthetic peptide located within the following region: QPGALGNTPPFLGQHGFNFFPGNADFSTWGTSGSQGQSTQSSAYSSSYGY
Formulation:	Liquid. Purified antibody supplied in 1x PBS buffer with 0.09% (w/v) sodium azide and 2% sucrose. <i>Note that this product is shipped as lyophilized powder to China customers.</i>
Purification:	Affinity Purified
Conjugation:	Unconjugated
Storage:	Store at -20°C as received.
Stability:	Stable for 12 months from date of receipt.
Predicted Protein Size:	64 kDa
Gene Name:	YTH N6-methyladenosine RNA binding protein 3
Database Link:	NP_689971 Entrez Gene 253943 Human Q7Z739
Background:	YTHDF3 contains 1 YTH domain. The functions of YTHDF3 remain unknown.
Synonyms:	FLJ31657
Note:	Immunogen sequence homology: Dog: 100%; Pig: 100%; Rat: 100%; Horse: 100%; Human: 100%; Mouse: 100%; Bovine: 100%; Rabbit: 100%; Guinea pig: 100%; Zebrafish: 93%



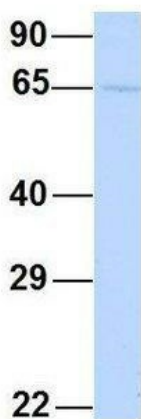
[View online »](#)

Product images:



WB Suggested Anti-YTHDF3 Antibody Titration:
0.2-1 ug/ml; ELISA Titer: 1:312500; Positive
Control: 293T cell lysate

YTHDF3



Rabbit Anti-YTHDF3
Sample Type: Human 721_B
Antibody Concentration: 1ug/mL

Host: Rabbit; Target Name: YTHDF3; Sample
Tissue: Human 721_B; Antibody Dilution:
1.0ug/ml