

## Product datasheet for **TA329787**

### YTHDF3 Rabbit Polyclonal Antibody

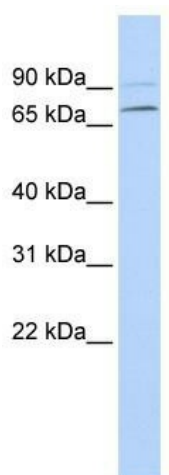
#### Product data:

|                         |   |
|-------------------------|---|
| Product Type:           | Primary Antibodies  |
| Applications:           | WB  |
| Recommended Dilution:   | WB  |
| Reactivity:             | Human   |
| Host:                   | Rabbit  |
| Isotype:                | IgG   |
| Clonality:              | Polyclonal  |
| Immunogen:              | The immunogen for anti-YTHDF3 antibody: synthetic peptide directed towards the N terminal of human YTHDF3. Synthetic peptide located within the following region:<br>GEAAWSTAGDQPMPYLTTYGQMSNGEHHYIPDGVFSQPGALGNTPPFLGQ |
| Formulation:            | Liquid. Purified antibody supplied in 1x PBS buffer with 0.09% (w/v) sodium azide and 2% sucrose.<br><i>Note that this product is shipped as lyophilized powder to China customers.</i>                                 |
| Purification:           | Affinity Purified   |
| Conjugation:            | Unconjugated  |
| Storage:                | Store at -20°C as received.   |
| Stability:              | Stable for 12 months from date of receipt.  |
| Predicted Protein Size: | 64 kDa  |
| Gene Name:              | YTH N6-methyladenosine RNA binding protein 3  |
| Database Link:          | <a href="#">NP_689971</a><br><a href="#">Entrez Gene 253943 Human</a><br><a href="#">Q7Z739</a>   |
| Background:             | YTHDF3 contains 1 YTH domain. The functions of YTHDF3 remain unknown.   |
| Synonyms:               | FLJ31657  |
| Note:                   | Immunogen sequence homology: Dog: 100%; Pig: 100%; Rat: 100%; Horse: 100%; Human: 100%; Mouse: 100%; Bovine: 100%; Rabbit: 100%; Guinea pig: 100%; Zebrafish: 93%   |

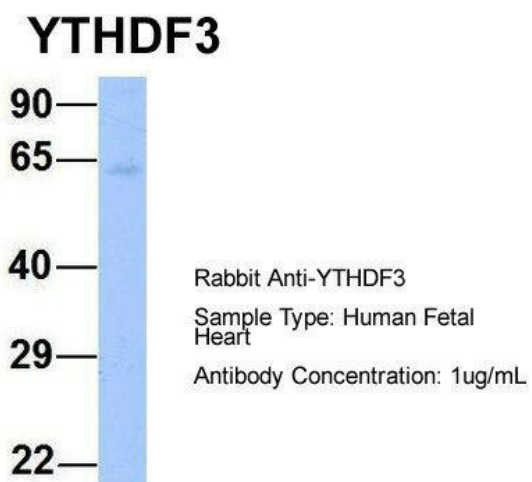


[View online »](#)

**Product images:**

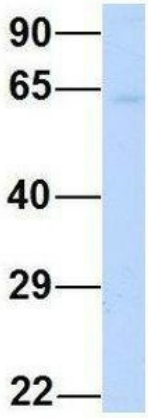


WB Suggested Anti-YTHDF3 Antibody Titration:  
0.2-1 ug/ml; ELISA Titer: 1:312500; Positive  
Control: Hela cell lysate



Host: Rabbit; Target Name: YTHDF3; Sample  
Tissue: Human Fetal Heart; Antibody Dilution: 1.0  
ug/ml

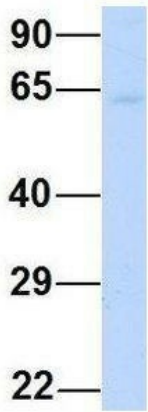
### YTHDF3



Rabbit Anti-YTHDF3  
Sample Type: Human Adult Placenta  
Antibody Concentration: 1ug/mL

Host: Rabbit; Target Name: YTHDF3; Sample Tissue: Human Adult Placenta; Antibody Dilution: 1.0 ug/ml

### YTHDF3



Rabbit Anti-YTHDF3  
Sample Type: Human Adult Placenta  
Antibody Concentration: 1ug/mL

Host: Rabbit; Target Name: YTHDF3; Sample Tissue: Human Adult Placenta; Antibody Dilution: 1.0ug/ml