

Product datasheet for **TA329786**

Semaphorin 3D (SEMA3D) Rabbit Polyclonal Antibody

Product data:

Product Type:	Primary Antibodies
Applications:	WB
Recommended Dilution:	WB
Reactivity:	Human
Host:	Rabbit
Isotype:	IgG
Clonality:	Polyclonal
Immunogen:	The immunogen for anti-SEMA3D antibody: synthetic peptide directed towards the middle region of human SEMA3D. Synthetic peptide located within the following region: LECI PKSQQATIKWYIQRSGDEHREELKPDERIIKTEYGLLIRSLQKKDS
Formulation:	Liquid. Purified antibody supplied in 1x PBS buffer with 0.09% (w/v) sodium azide and 2% sucrose. <i>Note that this product is shipped as lyophilized powder to China customers.</i>
Purification:	Affinity Purified
Conjugation:	Unconjugated
Storage:	Store at -20°C as received.
Stability:	Stable for 12 months from date of receipt.
Predicted Protein Size:	90 kDa
Gene Name:	semaphorin 3D
Database Link:	NP_689967 Entrez Gene 223117 Human O95025
Background:	SEMA3D induces the collapse and paralysis of neuronal growth cones. SEMA3D could potentially act as repulsive cues toward specific neuronal populations.
Synonyms:	coll-2; Sema-Z2
Note:	Immunogen sequence homology: Dog: 100%; Pig: 100%; Rat: 100%; Horse: 100%; Human: 100%; Mouse: 100%; Rabbit: 100%; Bovine: 93%

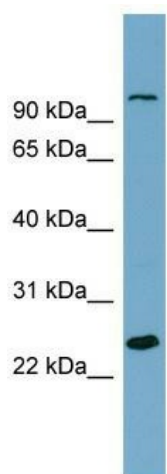


[View online »](#)

Protein Families: Transmembrane

Protein Pathways: Axon guidance

Product images:



WB Suggested Anti-SEMA3D Antibody Titration:
0.2-1 ug/ml; Positive Control: THP-1 cell lysate