

Product datasheet for **TA329785**

C10orf30 (BEND7) Rabbit Polyclonal Antibody

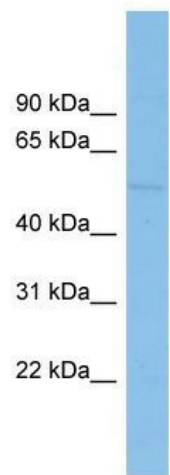
Product data:

| | |
|--------------------------------|---|
| Product Type: | Primary Antibodies |
| Applications: | WB |
| Recommended Dilution: | WB |
| Reactivity: | Human |
| Host: | Rabbit |
| Isotype: | IgG |
| Clonality: | Polyclonal |
| Immunogen: | The immunogen for anti-BEND7 antibody: synthetic peptide directed towards the middle region of human BEND7. Synthetic peptide located within the following region: LGFGIVLESPSSDPEVQLAEGFDVFMPSQLDSILSNYTRSGSLLFRKLV |
| Formulation: | Liquid. Purified antibody supplied in 1x PBS buffer with 0.09% (w/v) sodium azide and 2% sucrose. |
| Purification: | Affinity Purified |
| Conjugation: | Unconjugated |
| Storage: | Store at -20°C as received. |
| Stability: | Stable for 12 months from date of receipt. |
| Predicted Protein Size: | 51 kDa |
| Gene Name: | BEN domain containing 7 |
| Database Link: | NP_689964 Entrez Gene 222389 Human Q8N7W2 |
| Background: | The function of this protein remains unknown. |
| Synonyms: | C10orf30 |
| Note: | Immunogen sequence homology: Horse: 100%; Human: 100%; Mouse: 100%; Dog: 93%; Pig: 93%; Rat: 93%; Bovine: 93%; Rabbit: 93%; Guinea pig: 93% |



[View online »](#)

Product images:



WB Suggested Anti-BEND7 Antibody Titration:
0.2-1 ug/ml; ELISA Titer: 1:62500; Positive Control:
OVCAR-3 cell lysate