

Product datasheet for **TA329783**

ATXN7L1 Rabbit Polyclonal Antibody

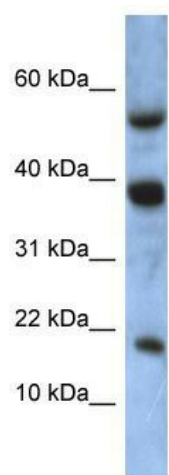
Product data:

Product Type:	Primary Antibodies
Applications:	WB
Recommended Dilution:	WB
Reactivity:	Human
Host:	Rabbit
Isotype:	IgG
Clonality:	Polyclonal
Immunogen:	The immunogen for anti-ATXN7L1 antibody: synthetic peptide directed towards the middle region of human ATXN7L1. Synthetic peptide located within the following region: KVPSPEAFLGKPWSSWIDAAKLHCSDNVDLEEAGKEGGKSREVMRLNKED
Formulation:	Liquid. Purified antibody supplied in 1x PBS buffer with 0.09% (w/v) sodium azide and 2% sucrose. <i>Note that this product is shipped as lyophilized powder to China customers.</i>
Purification:	Affinity Purified
Conjugation:	Unconjugated
Storage:	Store at -20°C as received.
Stability:	Stable for 12 months from date of receipt.
Predicted Protein Size:	16 kDa
Gene Name:	ataxin 7 like 1
Database Link:	NP_689962 Entrez Gene 222255 Human Q9ULK2
Background:	The exact function of ATXN7L1 remains unknown.
Synonyms:	ATXN7L4
Note:	Immunogen sequence homology: Rat: 100%; Human: 100%; Mouse: 100%; Bovine: 100%; Rabbit: 100%



[View online »](#)

Product images:



WB Suggested Anti-ATXN7L1 Antibody Titration:
0.2-1 ug/ml; ELISA Titer: 1:12500; Positive Control:
MCF7 cell lysate