

Product datasheet for **TA329782**

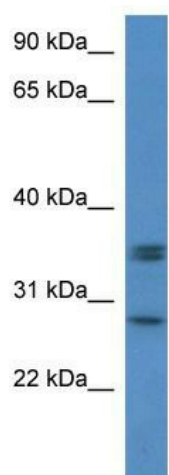
Nxph1 Rabbit Polyclonal Antibody

Product data:

Product Type:	Primary Antibodies
Applications:	WB
Recommended Dilution:	WB
Reactivity:	Mouse
Host:	Rabbit
Isotype:	IgG
Clonality:	Polyclonal
Immunogen:	The immunogen for anti-Nxph1 antibody: synthetic peptide corresponding to a region of Mouse. Synthetic peptide located within the following region: LLQPTVYLVT CANLTNGGKSELLKSGSSKSTLKHIWTESSKDLISRLLS
Formulation:	Liquid. Purified antibody supplied in 1x PBS buffer with 0.09% (w/v) sodium azide and 2% sucrose.
Conjugation:	Unconjugated
Storage:	Store at -20°C as received.
Stability:	Stable for 12 months from date of receipt.
Predicted Protein Size:	30 kDa
Gene Name:	neurexophilin 1
Database Link:	NP_032777 Entrez Gene 18231 Mouse Q61200
Background:	The function of this protein remains unknown.
Synonyms:	Nbla00697; NPH1; OTTHUMP00000200862
Note:	Immunogen sequence homology: Dog: 100%; Pig: 100%; Rat: 100%; Horse: 100%; Human: 100%; Mouse: 100%; Bovine: 93%; Rabbit: 93%; Guinea pig: 93%; Zebrafish: 92%



[View online »](#)

Product images:

WB Suggested Anti-Nxph1 Antibody; Titration: 1.0 ug/ml; Positive Control: Mouse Small Intestine