

Product datasheet for **TA329779**

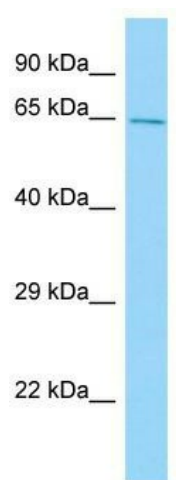
Cpne2 Rabbit Polyclonal Antibody

Product data:

Product Type:	Primary Antibodies
Applications:	WB
Recommended Dilution:	WB
Reactivity:	Mouse
Host:	Rabbit
Isotype:	IgG
Clonality:	Polyclonal
Immunogen:	The immunogen for Anti-Cpne2 antibody is: synthetic peptide directed towards the N-terminal region of Mouse Cpne2. Synthetic peptide located within the following region: QCCVCKVELSVSGQNLLDRDVTSKSDPFCVLFIEDNGRWMEFDRRTETAVN
Formulation:	Liquid. Purified antibody supplied in 1x PBS buffer with 0.09% (w/v) sodium azide and 2% sucrose. <i>Note that this product is shipped as lyophilized powder to China customers.</i>
Conjugation:	Unconjugated
Storage:	Store at -20°C as received.
Stability:	Stable for 12 months from date of receipt.
Predicted Protein Size:	60 kDa
Gene Name:	copine II
Database Link:	NP_705727 Entrez Gene 234577 Mouse P59108
Background:	Calcium-dependent membrane-binding proteins may regulate molecular events at the interface of the cell membrane and cytoplasm. This gene is one of several genes that encodes a calcium-dependent protein containing two N-terminal type II C2 domains and an integrin A domain-like sequence in the C-terminus.
Synonyms:	COPN2; CPN2; DKFZp686E06199; MGC16924
Note:	Immunogen sequence homology: Dog: 100%; Pig: 100%; Rat: 100%; Human: 100%; Mouse: 100%; Bovine: 100%; Rabbit: 100%; Guinea pig: 100%; Horse: 93%; Zebrafish: 85%



[View online »](#)

Product images:

WB Suggested Anti-Cpne2 Antibody; Titration: 1.0 ug/ml; Positive Control: Mouse Stomach