

Product datasheet for **TA329778**

HEPACAM Rabbit Polyclonal Antibody

Product data:

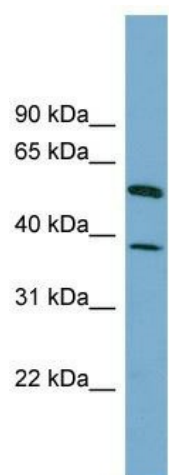
Product Type:	Primary Antibodies
Applications:	WB
Recommended Dilution:	WB
Reactivity:	Human
Host:	Rabbit
Isotype:	IgG
Clonality:	Polyclonal
Immunogen:	The immunogen for anti-HEPACAM antibody: synthetic peptide directed towards the N terminal of human HEPACAM. Synthetic peptide located within the following region: LLLSDLQLADEGTYEVEISITDDTFTGEKTINLTVDPISRPQVLVASTT
Formulation:	Liquid. Purified antibody supplied in 1x PBS buffer with 0.09% (w/v) sodium azide and 2% sucrose. <i>Note that this product is shipped as lyophilized powder to China customers.</i>
Purification:	Affinity Purified
Conjugation:	Unconjugated
Storage:	Store at -20°C as received.
Stability:	Stable for 12 months from date of receipt.
Predicted Protein Size:	46 kDa
Gene Name:	hepatic and glial cell adhesion molecule
Database Link:	NP_689935 Entrez Gene 220296 Human Q14CZ8
Background:	HEPACAM is involved in regulating cell motility and cell-matrix interactions. HEPACAM may inhibit cell growth through suppression of cell proliferation.
Synonyms:	GlialCAM; MLC2A; MLC2B
Note:	Immunogen sequence homology: Dog: 100%; Pig: 100%; Rat: 100%; Horse: 100%; Human: 100%; Mouse: 100%; Bovine: 100%; Rabbit: 100%; Guinea pig: 93%



[View online »](#)

Protein Families: Druggable Genome, Transmembrane

Product images:



WB Suggested Anti-HEPACAM Antibody Titration:
0.2-1 ug/ml; Positive Control: HT1080 cell lysate