

Product datasheet for **TA329776**

TEX47 Rabbit Polyclonal Antibody

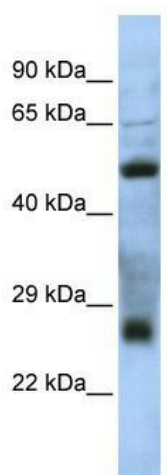
Product data:

Product Type:	Primary Antibodies
Applications:	WB
Recommended Dilution:	WB
Reactivity:	Human
Host:	Rabbit
Isotype:	IgG
Clonality:	Polyclonal
Immunogen:	The immunogen for anti-MGC26647 antibody: synthetic peptide directed towards the N terminal of human MGC26647. Synthetic peptide located within the following region: EEKQRLHLKKFLLDRMFLVAKIQANVERKDVADYYEQMFQSVLKHHLGEA
Formulation:	Liquid. Purified antibody supplied in 1x PBS buffer with 0.09% (w/v) sodium azide and 2% sucrose.
Purification:	Affinity Purified
Conjugation:	Unconjugated
Storage:	Store at -20°C as received.
Stability:	Stable for 12 months from date of receipt.
Predicted Protein Size:	29 kDa
Gene Name:	chromosome 7 open reading frame 62
Database Link:	NP_689919 Entrez Gene 219557 Human Q8TBZ9
Background:	The exact function of MGC26647 remains unknown.
Synonyms:	MGC26647
Note:	Immunogen sequence homology: Human: 100%; Bovine: 77%



[View online »](#)

Product images:



WB Suggested Anti-MGC26647 Antibody Titration:
0.2-1 ug/ml; ELISA Titer: 1:312500; Positive
Control: Jurkat cell lysate