

Product datasheet for **TA329775**

SENP5 Rabbit Polyclonal Antibody

Product data:

| | |
|-------------------------|---|
| Product Type: | Primary Antibodies |
| Applications: | WB |
| Recommended Dilution: | WB |
| Reactivity: | Human, Rat |
| Host: | Rabbit |
| Isotype: | IgG |
| Clonality: | Polyclonal |
| Immunogen: | The immunogen for anti-SENP5 antibody: synthetic peptide directed towards the middle region of human SENP5. Synthetic peptide located within the following region: LSGFLDEVMMKKYGSVPLSEKEVLGRLKDFNEDFSNRKPFINREITNYR |
| Formulation: | Liquid. Purified antibody supplied in 1x PBS buffer with 0.09% (w/v) sodium azide and 2% sucrose. <i>Note that this product is shipped as lyophilized powder to China customers.</i> |
| Purification: | Affinity Purified |
| Conjugation: | Unconjugated |
| Storage: | Store at -20°C as received. |
| Stability: | Stable for 12 months from date of receipt. |
| Predicted Protein Size: | 87 kDa |
| Gene Name: | SUMO1/sentrin specific peptidase 5 |
| Database Link: | NP_689912 Entrez Gene 303874 RatEntrez Gene 205564 Human Q96HI0 |
| Background: | The reversible posttranslational modification of proteins by the addition of small ubiquitin-like SUMO proteins (see SUMO1; MIM 601912) is required for numerous biologic processes. SUMO-specific proteases, such as SENP5, are responsible for the initial processing of SUMO precursors to generate a C-terminal diglycine motif required for the conjugation reaction. They also have isopeptidase activity for the removal of SUMO from high molecular mass SUMO conjugates. |



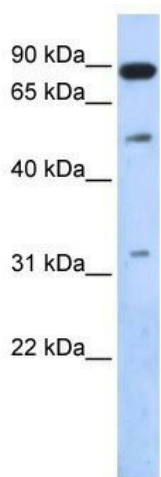
[View online »](#)

Synonyms: DKFZp564O1016; FLJ42398; MGC27076

Note: Immunogen sequence homology: Dog: 100%; Pig: 100%; Rat: 100%; Horse: 100%; Human: 100%; Mouse: 100%; Bovine: 100%; Rabbit: 100%; Guinea pig: 100%

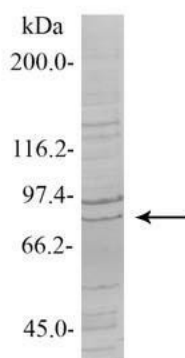
Protein Families: Druggable Genome, Protease

Product images:



WB Suggested Anti-SENP5 Antibody Titration: 0.2-1 ug/ml; ELISA Titer: 1:312500; Positive Control: 293T cell lysate

SENP5



Sample Type: 1.Rat Testis cells (200 ug) ; Primary Dilution: 1:1000; Secondary Antibody: alkaline phosphatase-conjugated anti-rabbit; Secondary Dilution: 1:1000

See Immunoblot 2 Data for more information.