

Product datasheet for **TA329772**

IQCE Rabbit Polyclonal Antibody

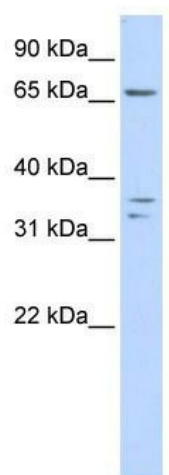
Product data:

Product Type:	Primary Antibodies
Applications:	WB
Recommended Dilution:	WB
Reactivity:	Human
Host:	Rabbit
Isotype:	IgG
Clonality:	Polyclonal
Immunogen:	The immunogen for anti-IQCE antibody: synthetic peptide directed towards the middle region of human IQCE. Synthetic peptide located within the following region: KKMGSAALLSLRSVQELTEENQSLKEDLDRVLSTPTISKQGYVEWSKP
Formulation:	Liquid. Purified antibody supplied in 1x PBS buffer with 0.09% (w/v) sodium azide and 2% sucrose. <i>Note that this product is shipped as lyophilized powder to China customers.</i>
Purification:	Affinity Purified
Conjugation:	Unconjugated
Storage:	Store at -20°C as received.
Stability:	Stable for 12 months from date of receipt.
Predicted Protein Size:	77 kDa
Gene Name:	IQ motif containing E
Database Link:	NP_689771 Entrez Gene 23288 Human Q6IPM2
Background:	IQCE contains 2 IQ domains. The functions of IQCE remain unknown.
Synonyms:	1700028P05Rik
Note:	Immunogen sequence homology: Dog: 100%; Pig: 100%; Rat: 100%; Horse: 100%; Human: 100%; Mouse: 100%; Bovine: 100%; Rabbit: 100%; Guinea pig: 100%; Yeast: 86%



[View online »](#)

Product images:



WB Suggested Anti-IQCE Antibody Titration: 0.2-1 ug/ml; ELISA Titer: 1:1562500; Positive Control: Human Placenta