

Product datasheet for **TA329767**

C9orf25 (FAM219A) Rabbit Polyclonal Antibody

Product data:

Product Type:	Primary Antibodies
Applications:	WB
Recommended Dilution:	WB
Reactivity:	Human
Host:	Rabbit
Isotype:	IgG
Clonality:	Polyclonal
Immunogen:	The immunogen for anti-C9orf25 antibody: synthetic peptide directed towards the middle region of human C9orf25. Synthetic peptide located within the following region: SSSGYSSAEQINQDLNIQLLKDGYRLDEIPDDEDLDLIPPKSVNPTCMCC
Formulation:	Liquid. Purified antibody supplied in 1x PBS buffer with 0.09% (w/v) sodium azide and 2% sucrose. <i>Note that this product is shipped as lyophilized powder to China customers.</i>
Purification:	Affinity Purified
Conjugation:	Unconjugated
Storage:	Store at -20°C as received.
Stability:	Stable for 12 months from date of receipt.
Predicted Protein Size:	18 kDa
Gene Name:	family with sequence similarity 219 member A
Database Link:	NP_671735 Entrez Gene 203259 Human Q8IW50
Background:	The function of this protein has not been determined. The protein encoded by this gene has homologs that have been identified in mouse and macaque. The mouse and human proteins have a putative prenyl group binding site (CAAX box) at their C-terminus. A diverse list of proteins are known or strongly presumed to be the target of post-translational modification by the attachment of either a farnesyl or a geranyl-geranyl group to a cysteine residue at the C-terminus. The function of this protein has not been determined.

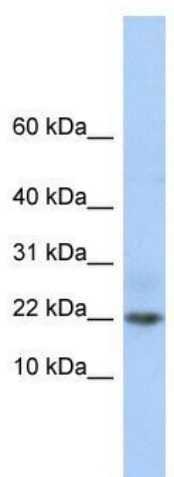


[View online »](#)

Synonyms: C9orf25

Note: Immunogen sequence homology: Dog: 100%; Pig: 100%; Rat: 100%; Horse: 100%; Human: 100%; Mouse: 100%; Bovine: 100%; Zebrafish: 100%; Guinea pig: 100%; Rabbit: 79%

Product images:



WB Suggested Anti-C9orf25 Antibody Titration:
0.2-1 ug/ml; ELISA Titer: 1:312500; Positive
Control: Jurkat cell lysate